

Natural Capital and Ecosystem Service Maps for Pen Farm

Introduction

The following maps have been created using the Eco-Serv GIS Toolkit <https://ecosystemsknowledge.net/ecoserv-gis>
The maps were generated for the entire Forest of Bowland AONB area and then cut to the boundary of our imaginary holding, Pen Farm.

The maps you can view here are:

- Elevation map
- Habitat map (showing natural capital assets)
- Access to Nature
- Agricultural production
- Air purification – demand & capacity
- Carbon storage in woodlands
- Carbon storage, in tons
- Noise regulation capacity
- Water flow capacity
- Water quality capacity

For further information about the methodology and the implications and analysis of these maps, please see the report '**Natural Capital in the Forest of Bowland AONB**' also published on our website.

For further information about the Pen farm maps see the report '**Plugging the income gap: Assessing environmental options for upland farms: A case study in Pendle Hill, Lancashire**' Natural Capital Solutions 2020.

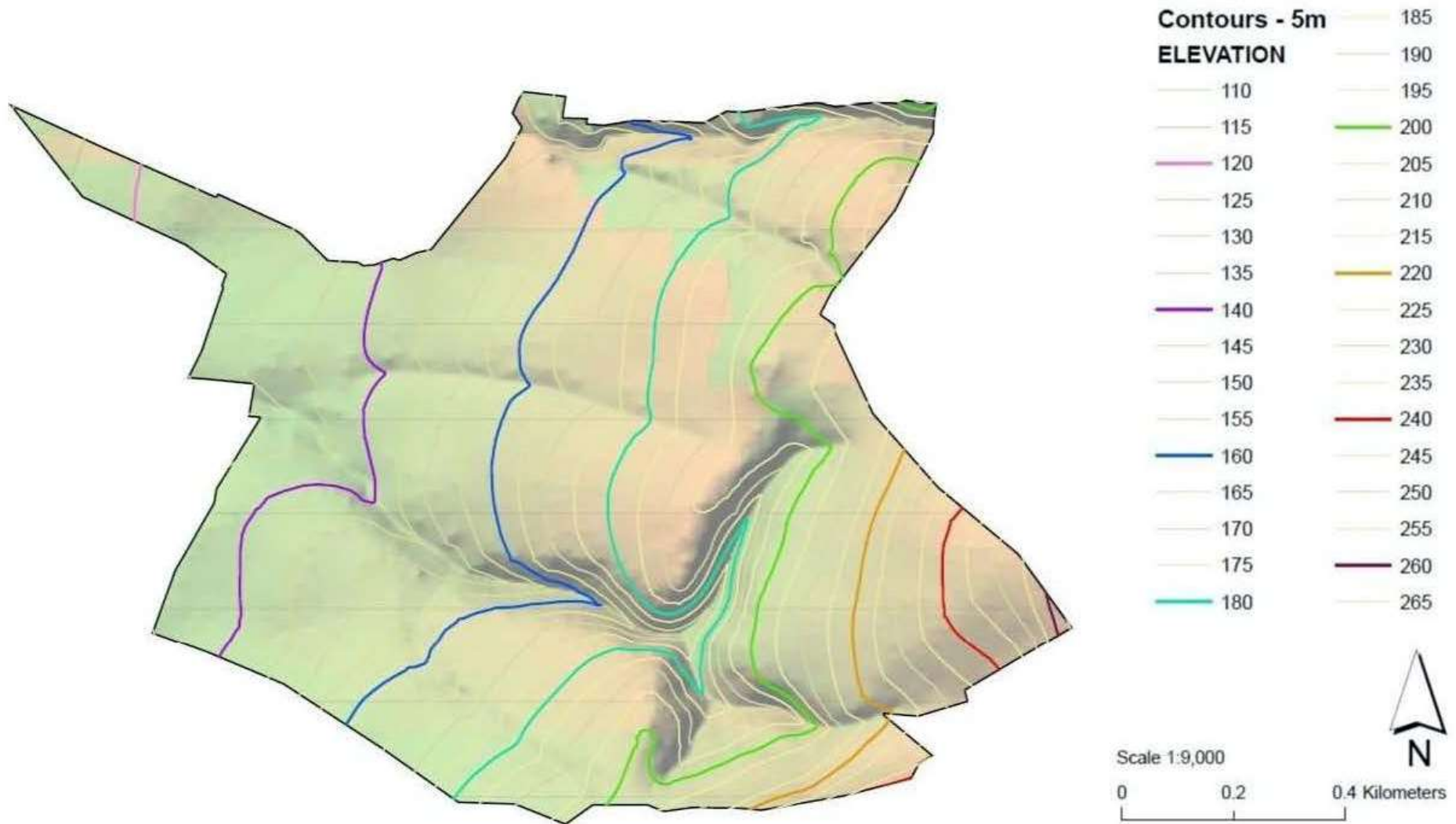
For more information visit www.pendlehillproject or contact the scheme manager and report commissioner: cathy.hopley@lancashire.gov.uk

Copyright

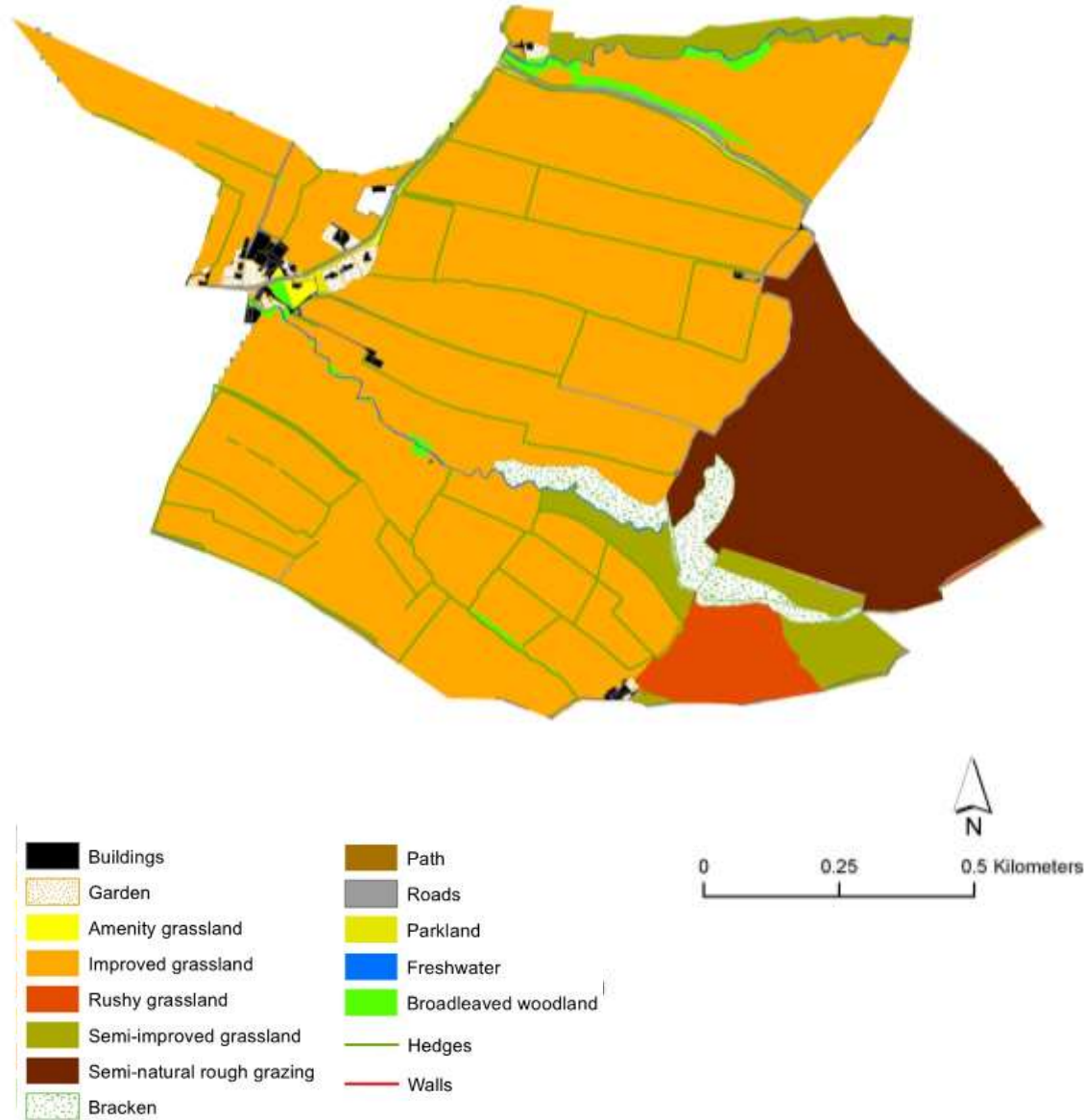
The maps here have been produced by © Natural Capital Solutions 2020. The maps contain, or are derived from Ordnance Survey data © Crown Copyright OS 1000023320 2020



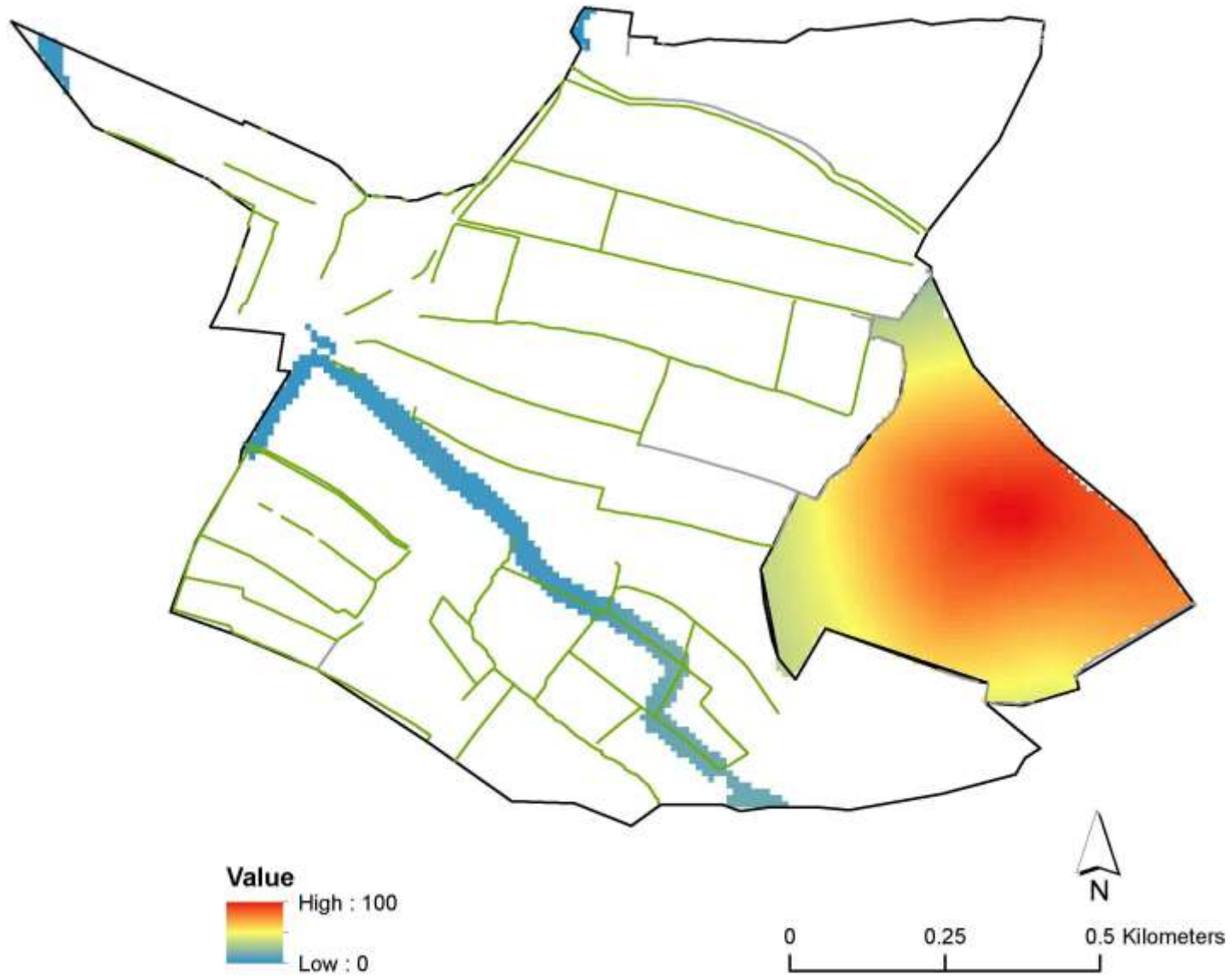
Pen Farm: Elevation



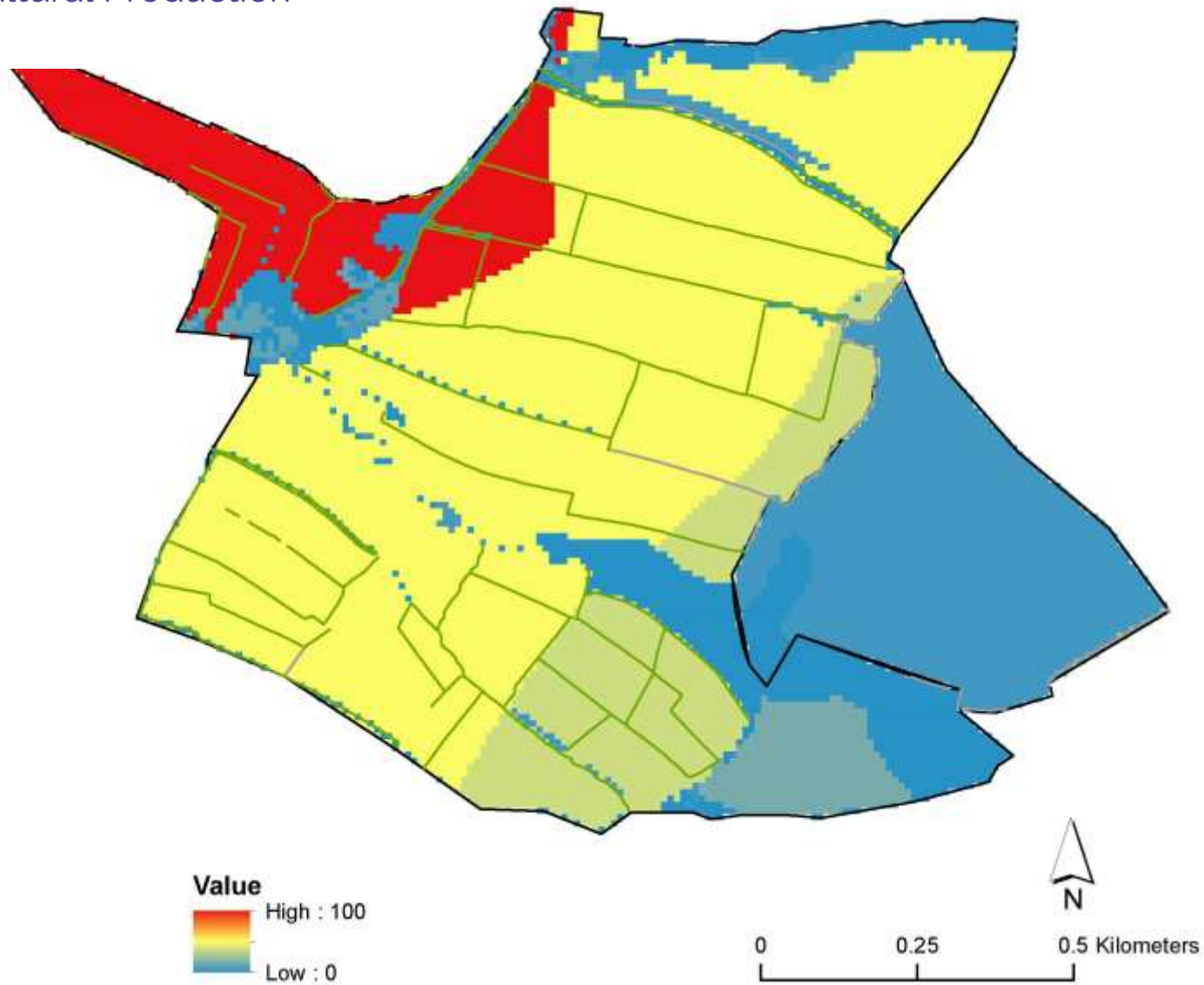
Pen Farm: Habitats



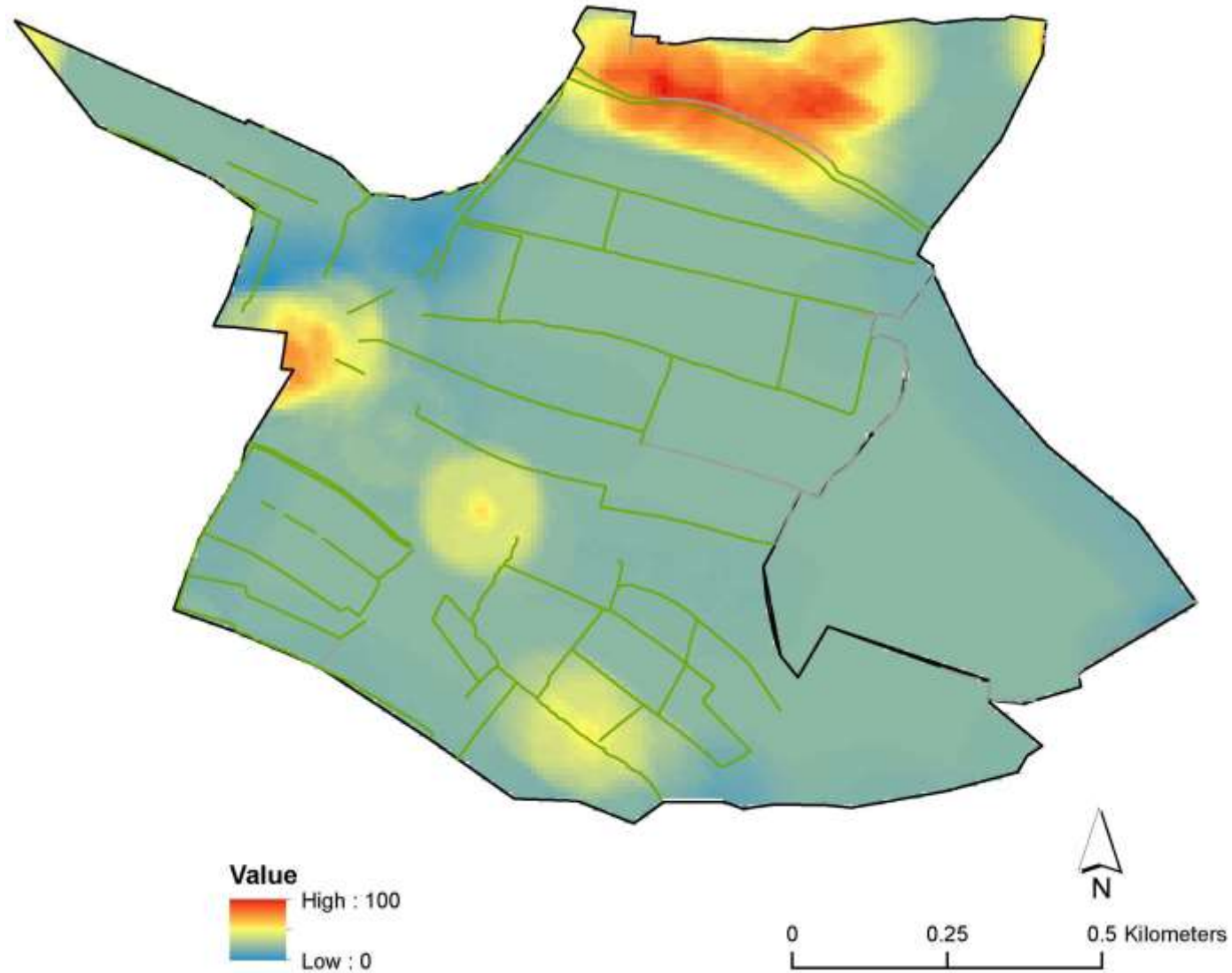
Pen Farm: Elevation



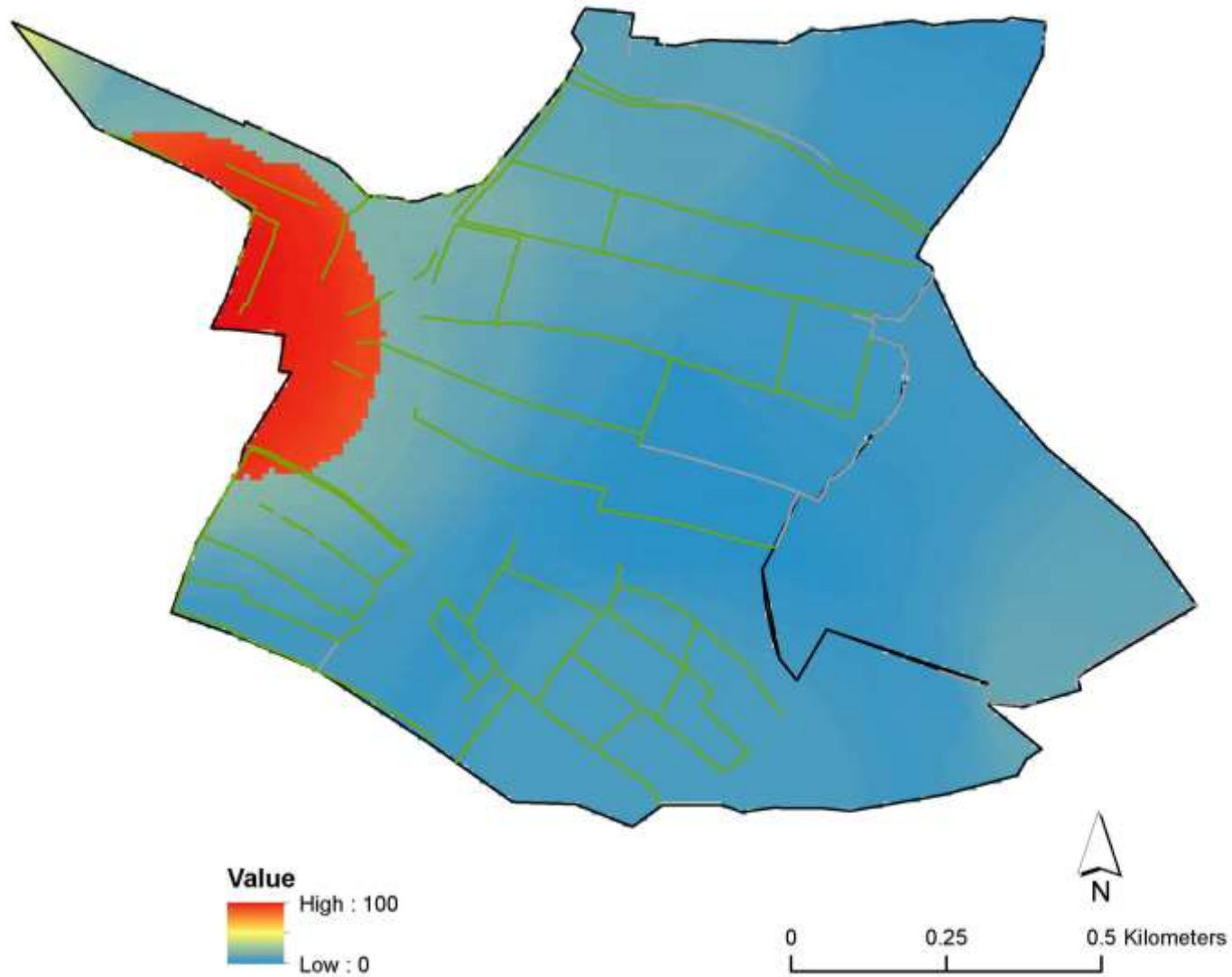
Pen Farm: Agricultural Production



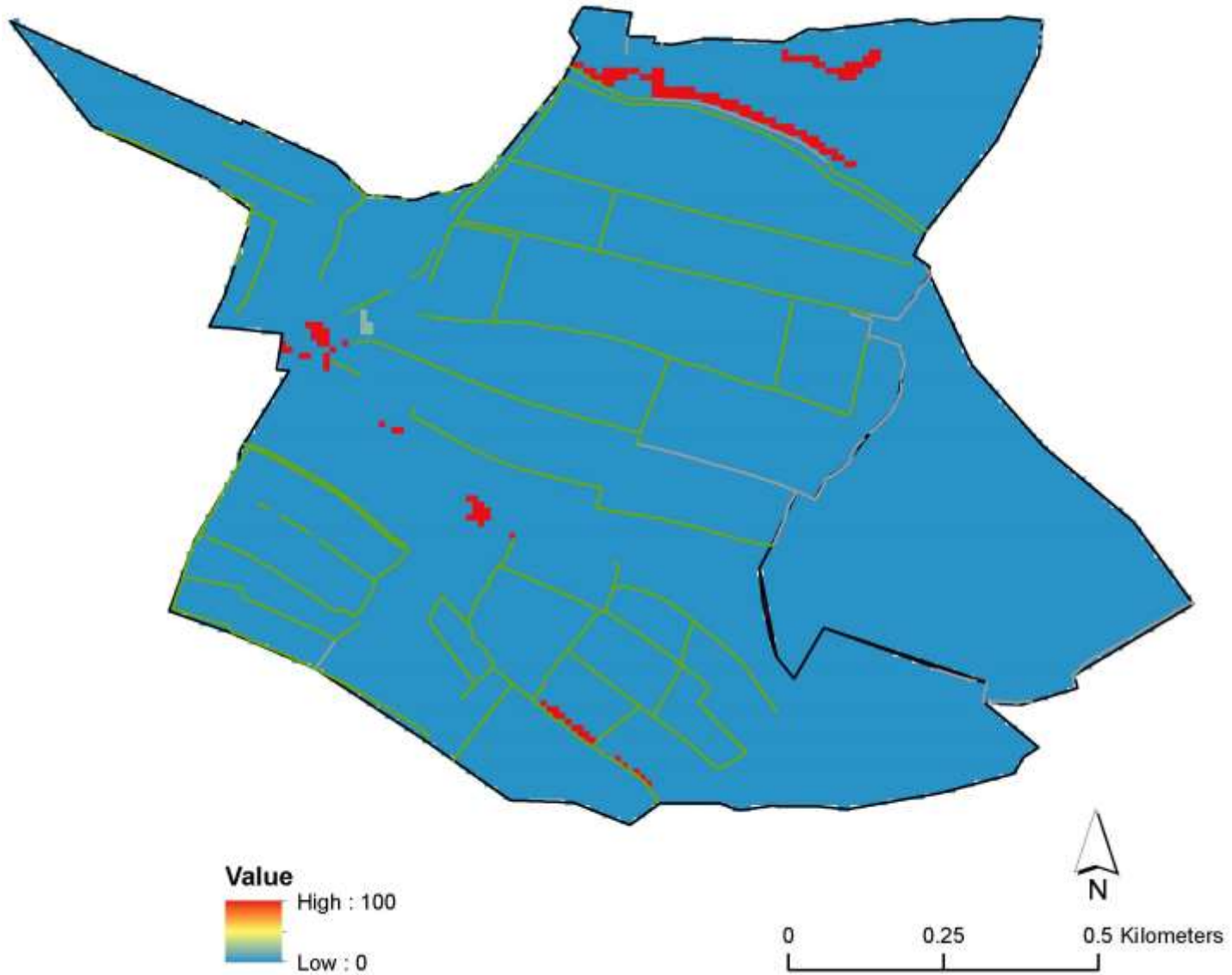
Pen Farm: Air Purification - Capacity Map



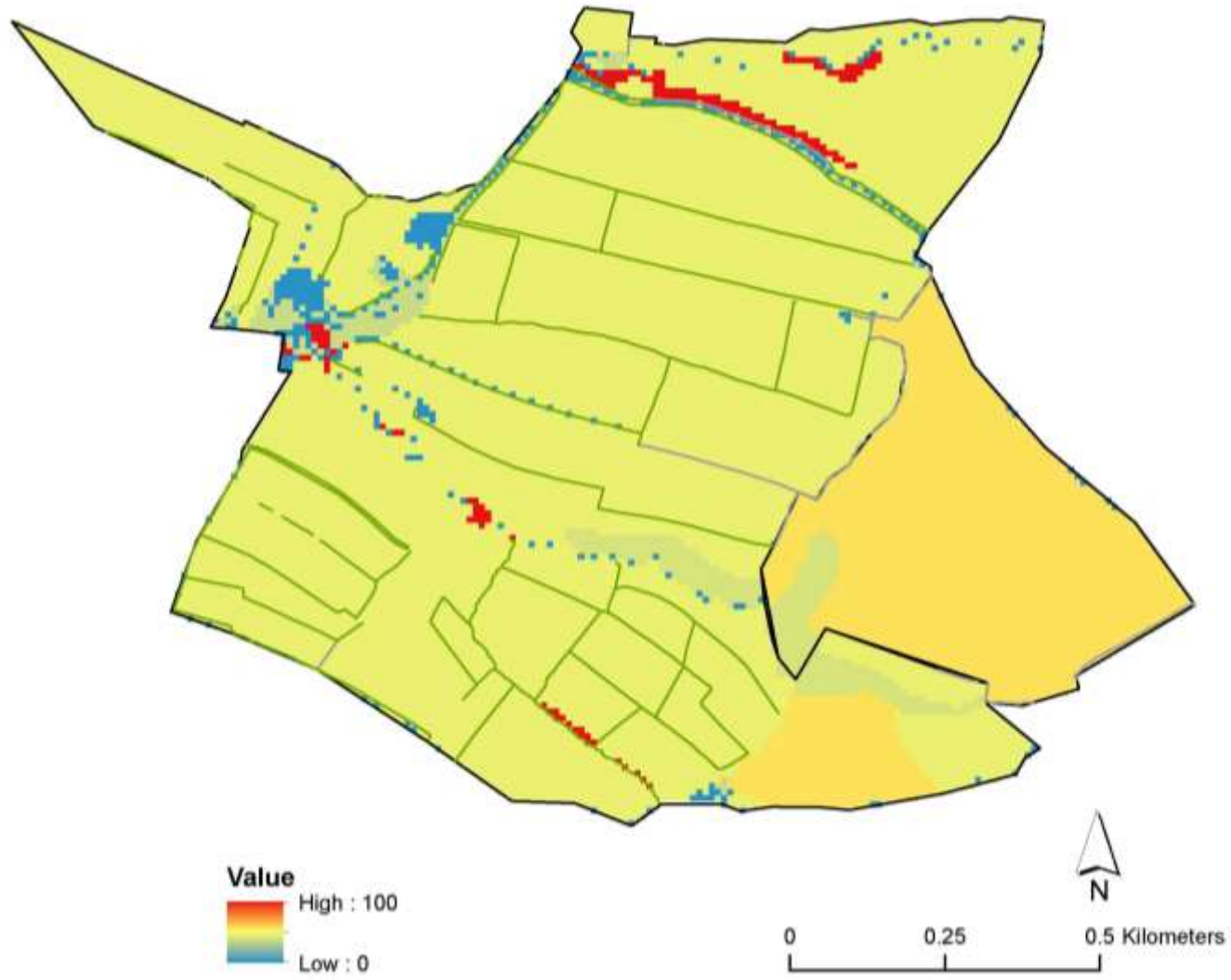
Pen Farm: Air Purification - Demand Map



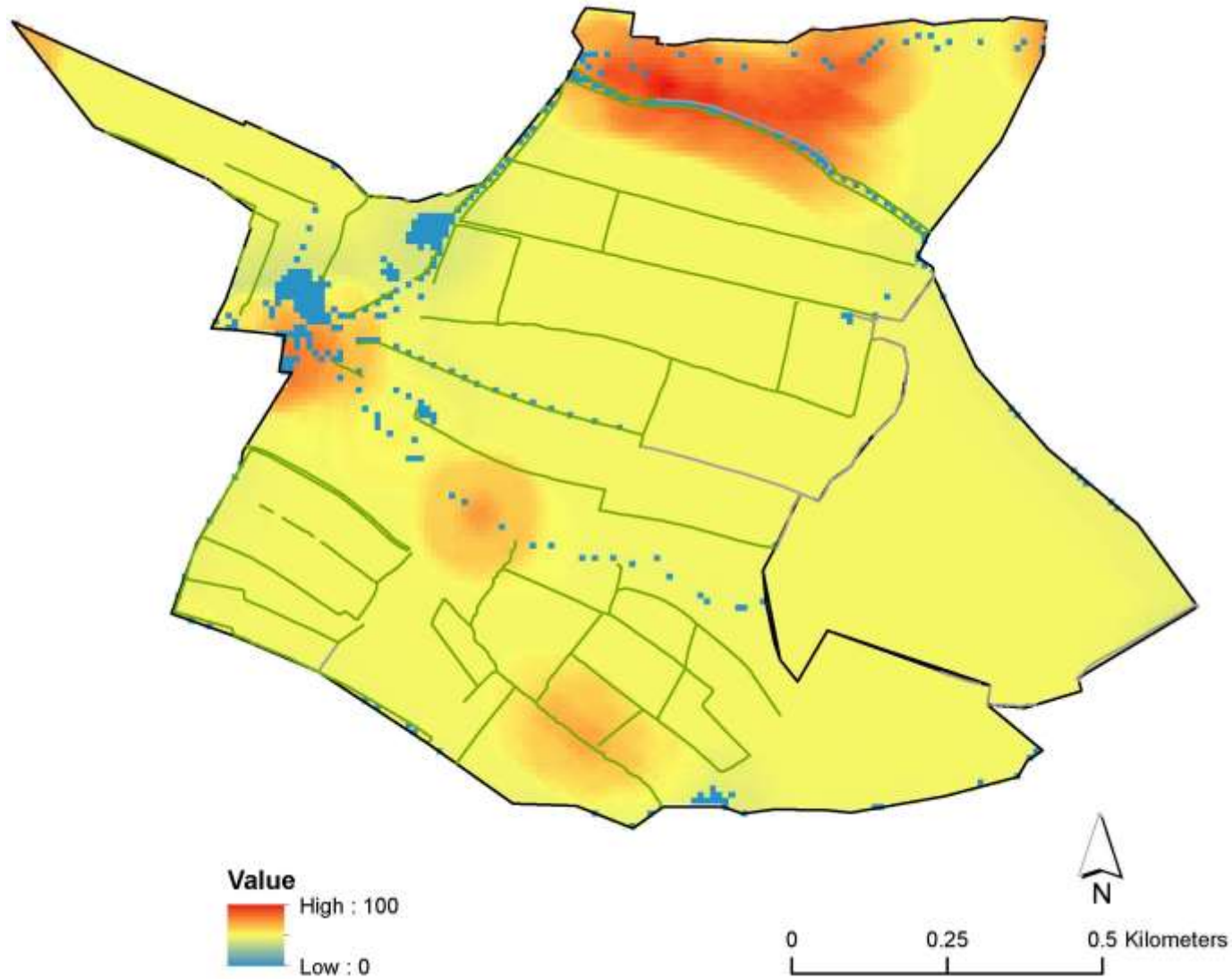
Pen Farm: Carbon storage in woodland



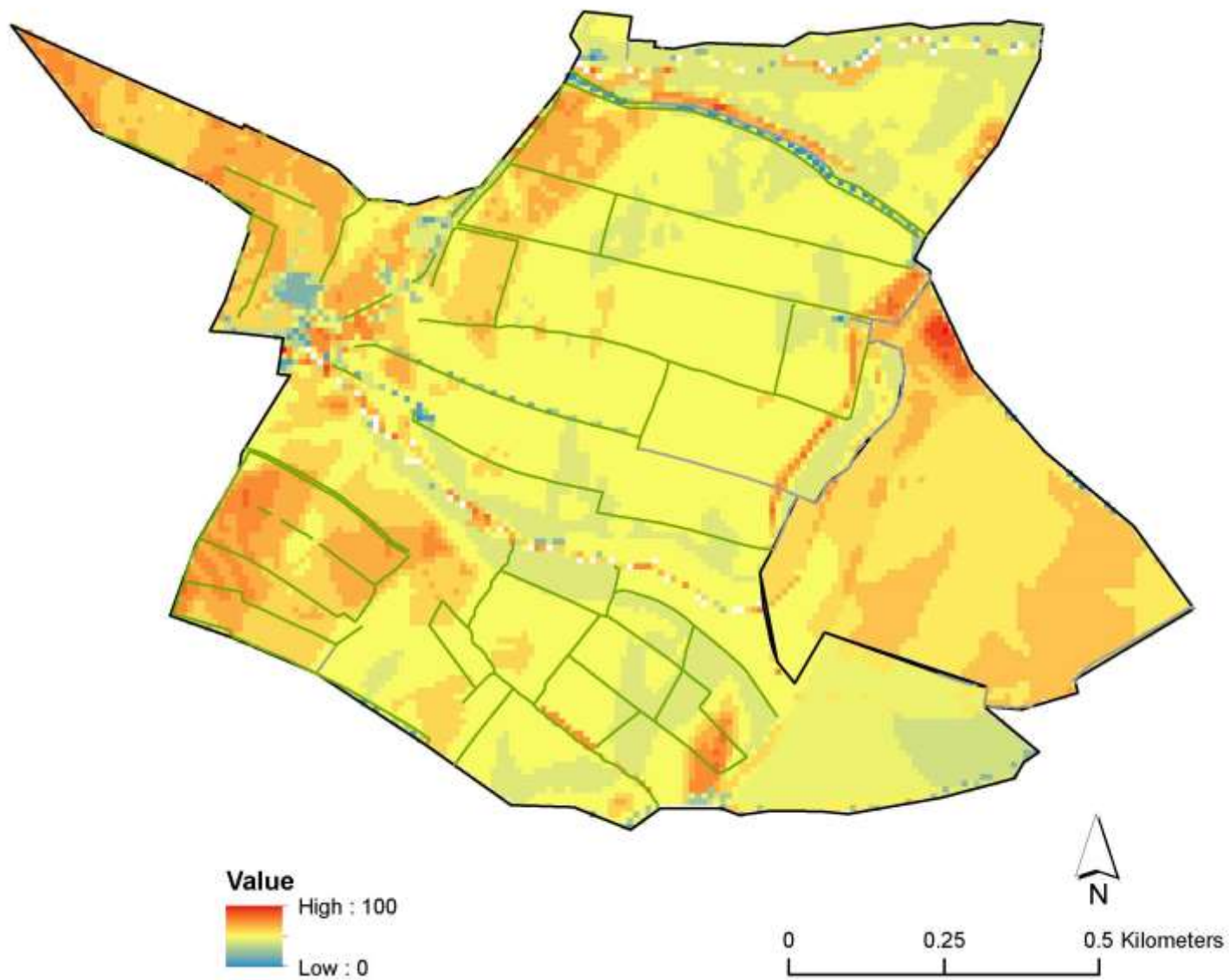
Pen Farm: Carbon storage (tons)



Pen Farm: Noise regulation – capacity map



Pen Farm: Water flow capacity



Pen Farm: Water quality capacity

