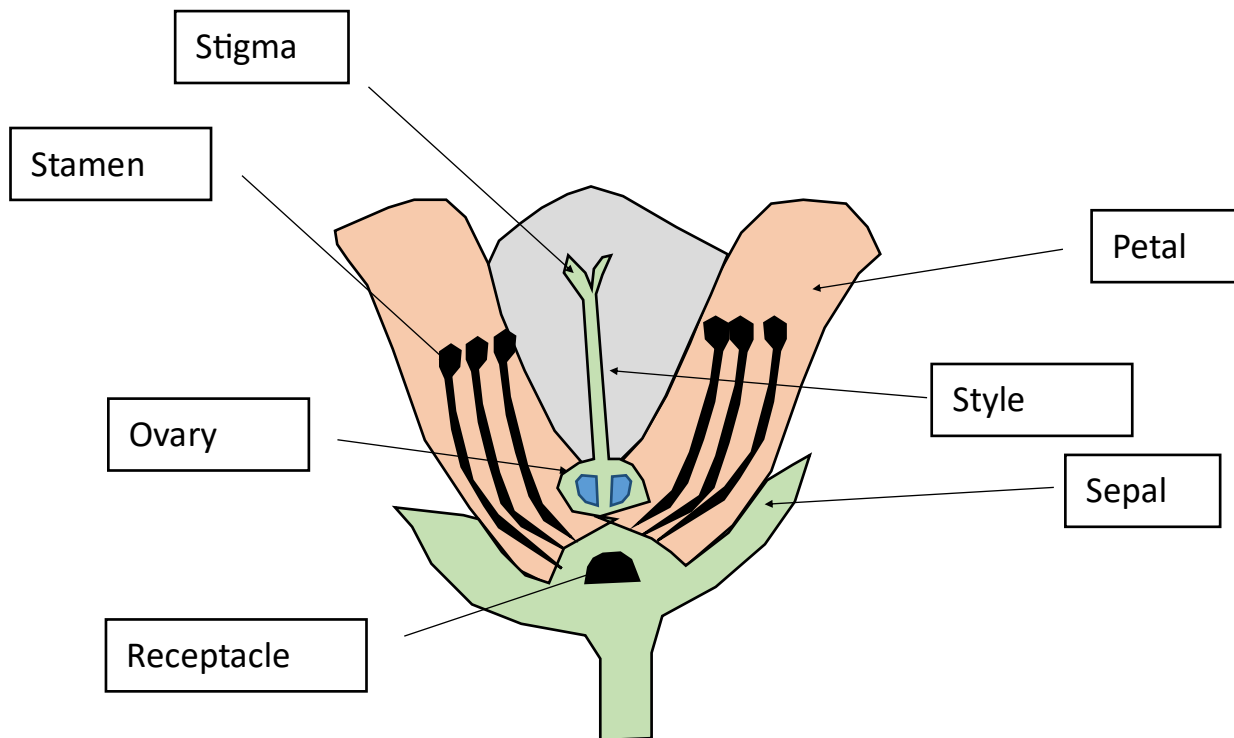


Flower Anatomy

Flowers can all look very different! They can be different colours, different sizes and shapes. However, most of them have the same fundamental anatomy (parts) which all have important roles.

When collecting materials and resources, please do this responsibly and sensibly. Please do not damage living things. Only collect materials that are already on the ground.

1. **Without picking the flower**, just crouch down and have a closer look at a flower. Can you see different parts to the flowers? **Flowers are much more useful when they are in the ground, so we don't need to pick any to do this activity.**
2. Collect natural resources that are already on the ground—for example twigs/sticks, leaves, grasses/moss.
3. Use the ground or a plain piece of paper. You might also need a pencil, some sticky tape and glue.
4. Take a look at the diagram below. This is a really rough sketch of a generic flower and the different parts within it. All flowers look different, so each part may not be in the exact same place in each flower, and not all flowers have all of these parts!



For more resources and outdoor lesson plans visit www.pendlehillproject.com/explore-learning © This document has been created by the Outdoor Learning Officer for The Ernest Cook Trust and Pendle Hill Landscape Partnership Scheme. The Scheme is led by the Forest of Bowland AONB and supported by the National Lottery Heritage Fund.

5. Now using your natural materials, try and represent the parts of a flower on your piece of paper or outdoor area, using the diagram to help. For example, you may want to use a twig as the flower stalk, or a piece of grass for the Stamen. When you have stuck down your materials, why not label up each part of the flower and write a key fact about what that part does for the flower

Petals: These are the colourful parts of the flower, and make the flower attractive to bees and insects.

Stamen: Pollen can be found on this part of the flower. The Stamen is made up of the Anther, that has the pollen at the top, and the Filament, which support it and holds it up. As the insects travel towards the bottom of the plant to get the nectar, the pollen rubs off onto their body and will be transported to another plant.

Stigma, Style and Ovary: All these parts make up the Carpel. The Style holds up the Stigma, the Stigma is the part where pollen germinates and the Ovary produces eggs—so it is a super important part.

Sepal: The outer parts of the flower, which is usually green and helps protect it.

Receptacle: The top of the flower stalk, where the flower head is attached.



For more resources and outdoor lesson plans visit www.pendlehillproject.com/explore-learning © This document has been created by the Outdoor Learning Officer for The Ernest Cook Trust and Pendle Hill Landscape Partnership Scheme. The Scheme is led by the Forest of Bowland AONB and supported by the National Lottery Heritage Fund.