

PENDLE HILL
LANDSCAPE
PARTNERSHIP



Quarterly Progress Report



Participants in our final event, a Mind-Body Connection walk with Stacey McKenna

November 2022-February 2023
Year 5 Quarter 3 (FINAL)



TOGETHER FOR OUR LANDMARK



LOTTERY FUNDED

Pendle Hill Landscape Partnership Team

Over the lifetime of the scheme:

Roles and Projects:

Scheme Manager: **Cathy Hopley**

- What's a Hill Worth
- Trainees

Community Engagement Officer: **Jayne Ashe (2016-22)**

- People Enjoying Nature
- Pendle Hill Fund
- Community Archaeology
- Volunteering and Learning

Outdoor Learning Officer: **Alison Cross**

- Volunteering and Learning

Farming and Wildlife Officer: **Sarah Robinson (2018-21)**

- Wild About Pendle Hill
- Farmer's Network
- Traditional Boundaries (contracts)

Countryside Access Officer: **Sarah Dornan**

- Pendle Hill Summit
- Access for All
- Volunteering and Learning

Business Support Officer: **Sarah Brooks-Silcock/Helen Coar/Nichola Gill**

Graduate Trainees: **Jessica Tearle/Dom Hartley/Christian Murray-Moon**

- Volunteering & Learning
- Traditional Boundaries
- Access for All

AONB Sustainable Tourism Officer: **Hetty Byrne**

- Discover Pendle Hill
- Interpretation

- Environment Co-ordinator at In-Situ for The Gatherings: **Andy Abbott/Sophie Mahon/Calum Bayne**

- Project Manager at Mid Pennine Arts for The Radicals: **Nick Hunt & Shonagh Short**

- Project officers at Ribble Rivers Trust for Pendle WINNS: **Richard Atton and Michelle Tierney/Leanne Tough/Kristina Graves**

- Project Co-ordinator at DSWA for Traditional Boundaries: **Sue Manson (2019-20)** and **Linda Clarkson**

The Environment

Restoring Traditional Boundaries

The final wall restoration contract at Meadowbank farm is now complete, with 250 m2 completed. This is slightly less than planned but still a very impressive job on a spectacular landscape feature. Peter Isherwood and his gang have battled the elements this year!

Our hope is that any additional length will be delivered via a farmer's FiPL agreement, drawn up on the basis that the joint owners wanted to get the boundary completed.

Grateful thanks are extended to Linda Clarkson at DSWA who co-ordinated most of the training element of work on this project. Linda chose to time her retirement with the end of the scheme, and we wish her well!



The challenging wall at Meadowbank Farm. On the flanks of Pendle.

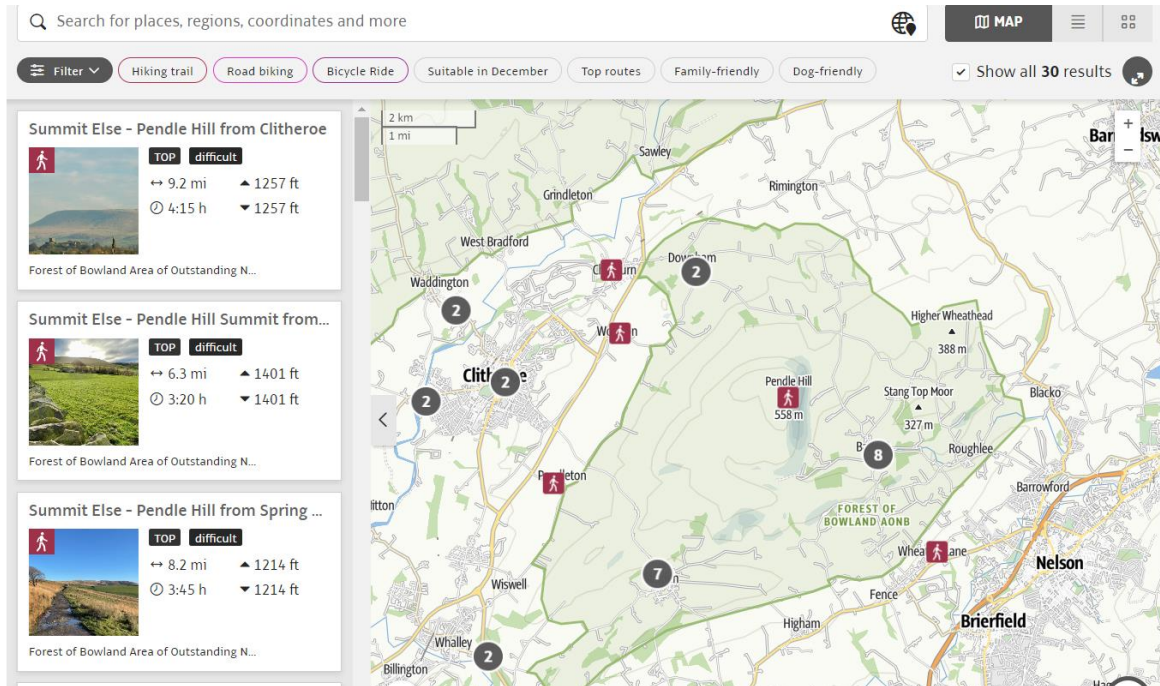


Linda visiting Foulds House wall to chat with Persy, one of her original DSWA Bursary Trainees and now a contractor for the PHLP

The Economy

Enhancing Visitor Gateways and key routes to Access Heritage

All new routes were completed in the last quarter, but we have been finishing up by checking the routes in bad weather, maintenance works, waymarking and uploading routes to the Outdoor Active app we utilise.



Screenshot from <https://www.pendlehillproject.com/explore-walking>

The Trammer shed is now connected to mains electric and the AONB will manage this in conjunction with Sabden Community Link and a group of volunteers who have been recruited and inducted. We are planning a 'Trammer experience day' to launch the vehicle and the local trail around Churn Clough in March and the AONB Countryside Access officer, Sarah Dornan, will continue to support this service.

Works to maintain the cart track and Trammer Trail have been commissioned, as has the final stretch of Pendle Way repairs leading to Pendleside. These heavily used trails will now be maintained by the Public Rights Of Way team, with support from the AONB.

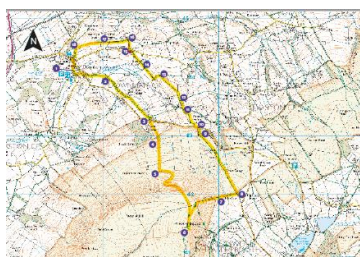
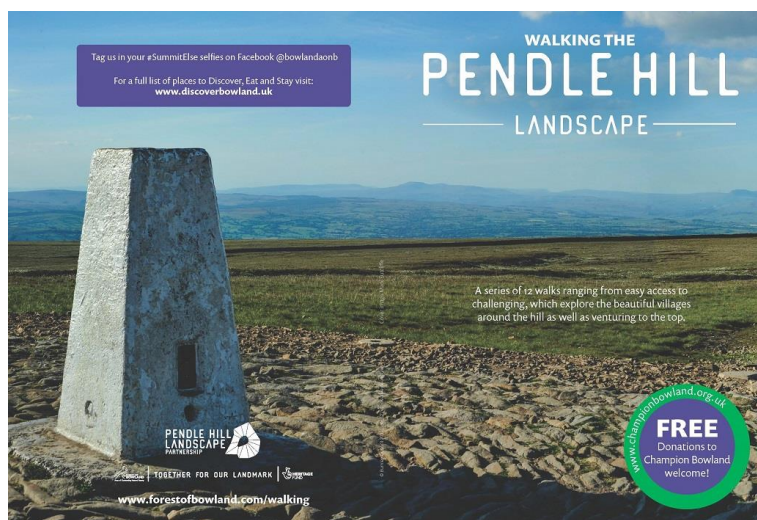
Fingerposts and way mark signs for a number of routes, including at Spring Wood, have been delivered and will be installed once we have good weather.

The 'Ride Pendle' selection of on and off road routes has been launched and promoted on social media in January, both with new printed publicity and dedicated web pages and Outdoor Active route plots. <https://www.pendlehillproject.com/explore-cycling> Big thanks to Phil Wade of Breaking Cycles.

Sense of Place and Sustainable Tourism

The final few events, herbal medicine walks; an outdoor mindfulness session and a dark skies event were held in November, with a total of 96 people attending. We had to run two of the herbal medicine walks as they were so popular!

The 'Summit Else' publication, a series of 12 walks on and around the hill, aimed at dispersing visitor pressure and encouraging keen walkers to explore the landscape and heritage, was launched over the New Year break via a social media campaign, to great effect. This was led by Salar Media in conjunction with Tom Pooley of 'Lancashire Lads' a local social influencer and walks specialist.



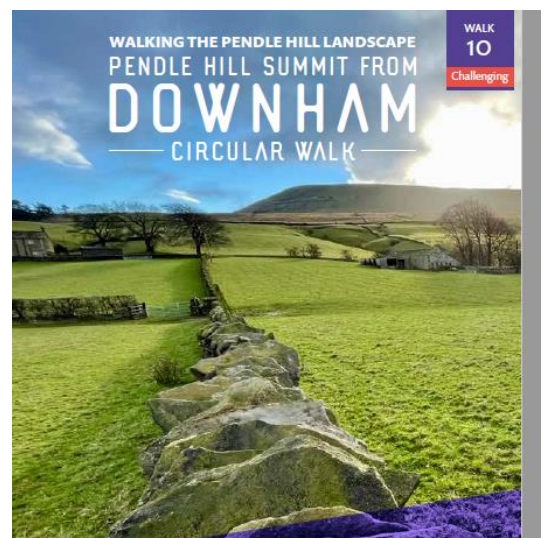
© Crown Copyright, British Mapping Limited, Ordnance Survey, 2017
www.forestofbowland.com/walking#65037372

- 1 **START** from the car park, head for the bridge in the centre of the village. Don't go over it but take the lane leading left, continue to the boathouse at end of the lane. Go through kissing gate and follow path back to back, then half right to kissing gate in top corner of field (ignore the stile to the left).
- 2 Go through gate and head right along field boundary, continuing to climb alongside the linnets, with the beck on your left, and over footbridge. At barn track, continue straight over, then along field boundary and over stone stile to Lane Head barn.
- 3 **LANE HEAD BARN** Head left pass benches then right over stile and through copse to road. Cross road and up path and through kissing gate onto the steep hillside and continue climbing steadily beside the wooded drough up to some stile where the gradient begins to ease.

- 4 **HOCKLEIFE PLANTATION** Continue across the hedge (plasma) to the base of the steep escarpment and pick up the path which zig zags left right left up the 'big roof' of Pendle. Please don't be tempted to head straight up as this erodes the peat; we are working to hard to reverse it.
- 5 Follow this zig zag path to the edge of summit plateau, just 200 metres from the summit shelter, beside the megal gate in the wall. From here, it's just another 300 metres to the summit ridge - clearly visible away to the southwest.



- 6 **PENDLE SUMMIT** from the summit, retrace your steps to wall and descend with wall on left, for 50m then cross stone stile and descend very steeply with wall on right.
- 7 **PIKE LAWN** When gradient eases, cross ladder stile and continue beside wall for another 300m.
- 8 At kissing gate, turn 90 degrees left and head through bushes towards marker post. Path is faint but marked by a series of posts. Head for the left hand edge of copse ahead. Keep following the marker post down into the drough and over the three beds draining it and up the other side to intercept the wall (conveniently from the left to the corner of the copse).
- 9 At corner of wood, cross stone stile and follow path beside wall to road.
- 10 At road, head left for 50m then take farm track on right (opposite Downton and Henson, follow track as it heads left down towards) Hockleife Farm.
- 11 At marker stone, follow footpath left and over stone stile to ston barnhouse, following marker stones to the stone stile underneath big tree.
- 12 Go over stile and follow field boundary over the hill and across another stile then descend across pastures to meet the wall.
- 13 Continue left along the wall then, opposite old quarry working, head right over stile.
- 14 **NEW CLOSE** Continue along field boundary towards farm and through spaces side under one, along farm to left then following field boundary to a kissing gate and then on to lane.
- 15 **TIMSTON LANE** Go left down lane then right along farm track (opposite concessionary forage).
- 16 Before reaching the barn, head left onto path along field boundary. Continue along farm track.
- 17 **HEY HOUSE FARM** Continue along field boundary for 50m, then over stone stile and straight across next field to ston copse and head through kissing gate and over the next field towards the church in Downton.
- 18 In far corner of the field, go left through the kissing gate then right through new gate to emerge next to the Ashwood Arms. Head left down the steep hill and right over the bridge and right again after ston to reach the car park.



Everyone

Running a Community Grant Scheme

The fund has now paid out to the final grant recipients, these were:

Parish fingerpost renovations – final sign installed near Simonstone:



Duncan Armstrong installs his new signpost for Simonstone & Read

Calico and Clogs Heritage Trail, Sabden - final report and payment request received and processed

The Ernest Cook Trust, utilising an underspend in the scheme as approved last Autumn, administered 18 small grants, of £500 each, to schools in our targeted area, providing funds for **'outdoor essentials'** including waterproofs and wellies; tools and raised beds for food growing; and educational outdoor learning kit.

"We cannot thank you enough for this grant.

We are determined that no child should go without the basic childhood experiences that we had as children. The joy of jumping in puddles or making dens to hide from the rain with 4 and 5 year olds who have never experienced that before is priceless.

This grant will help us achieve this, and look at other ways we can enrich their learning."

Feedback from an Early Years teacher at Bradley Primary school, Nelson who purchased children's outdoor clothing with their grant, November 2022

Providing Supported Activity Sessions for people dealing with mental health issues and social isolation

The PEN project has been continuing fortnightly sessions during November, December January and February. After that the AONB will fund a few additional sessions in March, prior to our new NLHF funded project starting in April.

In November the participants were able to go discovering fungi in Spring Wood, and they also took a long wet walk along the Ribble near Clitheroe. In December we had a private view of the exhibits at Clitheroe Castle and explored the grounds, and also took a walk through Barrowford Park and visited the Heritage Centre. Pete also decided to hold an informal social gathering at the Clarion House on 25th December for anyone who was alone or struggling with the festive season.



We did it! PEN participants, wet but not disheartened at the end of their wet walk in Clitheroe

Creatively Engaging People in our Radical History

The last written progress report for Pendle Radicals was back in July 2022. Since that time, the project has delivered a wide ranging sequence of significant results, this is Nick's update:

In July and September, we launched the three legs of the new, extended Walking with Radicals route, the Two Toms. The third leg, finishing with tea and cakes at the Earby hostel, was featured by our contributor Chris Moss in the Guardian Travel section. All four walks are now featured both as website downloads and on the mobile-friendly OutdoorActive.

In August, our volunteers made a powerful and well-received contribution to the academic *Piston, Pen & Press* Conference in Manchester, with a presentation from PhD researcher Jenny Harper and another from

Quarterly Report

the collective. This was also a rare chance to get together with our academic partners from Reading and Exeter Universities.

In Sept and Oct, two celebratory, live music events took a delve into the very influential cultural heritage of Welfare State International. A reunion event at Burnley Youth Theatre brought a dozen former members of the group back to the site they occupied in the 1970s. We followed this with a more intimate musical evening at The Garage in Brierfield.



All Lit Up performance at Burnley Youth Theatre

We collaborated with banner maker James Fox and our regular audio partners the Robertsons on work James was developing around the Right to Roam campaigns. His textile banners, featuring Radicals Stephenson and Leonard, along with an audio soundtrack featuring the voices of many Radicals volunteers plus a star guest or two, were put before large audiences at two major exhibitions at Windermere and Harrogate. 20,000 flocked to the Knitting & Stitching Show, but we have estimated that 1 in 4 took in James' installation.



Details from James Fox installation at Blackwells, Cumbria in summer 2022

The Banner Culture publication was finally received and distributed widely to the many lenders and stakeholders. Remaining copies are now on sale, with any proceeds being reinvested in continuing the legacy of the project. We have received orders from Zurich, Canada, Ireland, Hungary, France and the Sydney Trades Hall. The publication has inspired some hugely positive feedback, and we are very proud of it and grateful for the opportunity to create it. The book has been acquired by the six libraries of record, and we are proud too to know that copies are lodged at the British Library, the Bodleian, Cambridge University etc. We have also provided copies to the Lancashire Library Service.

The Radio 4 adaptations of Ethel Carnie's Miss Nobody were broadcast in October on two successive Sundays. Written by Radicals contributor Mary Cooper, they featured the singing voices of Radicals volunteers. Jules Gibb and Janet Swan were named in the credits. This was a wonderful culmination for our Ethel Carnie researchers. Average R4 audience for Sunday dramas is at least 300,000. We gathered a rather smaller group for a listening party at Clarion House.

Three separate audio works are now complete and awaiting release. As well as the twelve minute soundscape ROAM, we have three episodes of the podcast Grit, Grace & Gumption, and 50 minutes of oral history material collected at Clarion Sunday. These works will be released in sequence over the spring period, as we aim to maintain interest and attention in 110 days of our Crowdfund Lancashire campaign.

Four new Radicals Trail panels are in fabrication but not yet delivered. Sites are agreed and permissions given. The Shackleton panel will sit alongside the Pinnacle at Clitheroe Castle that celebrates parliamentary democracy. The others are Richard Cobden (Sabden), Tom Stephenson (Whalley) and Thomas Arthur Leonard (Colne)



Artist and designer Alan Ward checks out the locations for 2 of the last 4 Radicals panels in Sabden and Clitheroe

James Fox is creating a set of 12 banners of approx. 60 x 45 cm celebrating individual Radicals. As a part of the commission, he is also supplying poles for alternatively parading or exhibiting the banners.

Guardian feature writer Chris Moss has become involved in co-editing the Radicals Compendium publication, and we are delighted he has taken this on. New funding confirmed from the UK Shared

Quarterly Report

Prosperity Fund (Pendle Levelling Up) allows us to invest in an element of new writing. Both these factors have extended the time this is taking, but we believe the end result will be worth it.

Mid Pennine Arts have also invested time and energy in collaborating with Crowdfund Lancashire, a new culture and sport fund for the county. They hope that this will help them to raise considerable funds to continue their amazing work: <https://www.spacehive.com/pendleradicals> Plans include distribution of the Compendium, once complete, to every Lancashire library (70 branches) as well as to secondary schools and colleges more locally.

The set of 12 Radicals banners will be unveiled as we bring volunteers and contributors back together with a social and sharing event in spring or early summer. The crowdfund campaign is due to conclude in early June. By this point, our aim is to be able to launch the new membership society to sustain the project. The banners will form a perfect backdrop for this milestone event.



Participants get ready to tackle part 3 of the 'Two Toms' walk in September, led by Nick Burton

Threads

Holding the Gatherings and annual events to engage new audiences

During this period, we have supported Poet in-residence Hafsa Bashir in the culmination of their story mapping residency.

Hafsa has worked with a grassroots women's support group, The Deen Centre, based in Brierfield, throughout their residency. As part of this work, the women produced a series of Haiku poems, based on their experiences of living in the area and exploring the local landscape and how this connects to faith.

We were keen to ensure the work was publicly visible and have worked with graphic designer Dotto, alongside Hafsa, to produce a series of artworks based on the poems for public display. These will be displayed through:

- ✓ Sharing on a digital billboard on Manchester Road, Nelson for 1 month (started 13 Feb 2023).
- ✓ Through print on a signage board at Brierfield Railway station
- ✓ In the form of magnetic artworks on local cars, taxis and the PHLP van.

A further outcome of this residency work was the creation of a film entitled *Heart of Pendle* which was premiered at our final gathering event and has been shown widely on social media .



The electronic billboard showing some of the 'Heart of Pendle' poetry in Nelson

During this period, we have also worked with Nisha Duggal as artist in residence. During her residency, Nisha worked with people across the community to create handheld clay sculptures. Workshops took place in a range of community venues, and those that had attended the workshops, along with members of the general public, were invited to an event at Boothman Park.



Instagram post

During this event, fired clay sculptures from the workshops, along with some created on the day, were buried within a dry stone wall. During the event, members of the public were also invited to watch and get involved with repairing a dry stone wall. This work also left a subtle marker in the form of a custom-made stone sculpture, denoting the personal, ancestral themes of the work. A further outcome of this residency was a film entitled '*Held*'

We also curated and produced the Final Gathering event which brought together partners, participants, supporters and collaborators of the entire Gatherings program. As a final celebration and reflection event, we arranged a full day and evening event, which included;

- short talks
- site visits
- workshops relating to program themes, including; woodland and foraging walks
- film premiers
- live performances
- a three-course evening meal

The event had an overwhelmingly positive response from many attendees and it served as a perfect opportunity to reflect, celebrate and plan ahead with people involved in the project at many different levels. Over 140 attended across the day from across The Pendle Hill LP programme including; In-Situ resident artists, The Summit young peoples group and The Deen Centre as well as many stakeholders from the sector.

Documentation from the day can be seen here: <https://vimeo.com/763725231>

We have been working with Huckleberry films to create a short summary film of the arts and ecology work created through this programme. This film will act as a legacy to The Gatherings programme, and will be shared online and can be used in the future when speaking about The Gatherings programme, to inspire and share with others and to support our work in this area.

Co-ordinating Interpretation and Publicity

Our two main projects this quarter have been to get the **information panels** produced and installed and to **archive the website**.

Unfortunately, production issues at our suppliers mean the interpretation panels have only just been delivered, and we are planning to get them (all 14!) installed as soon as we can at Barley, Clarion House, Nick o' Pendle and Spring Wood



Two of the panels we will install at Spring Wood

In the meantime, Friends of Spring Wood have been putting in the new Tree ID posts at the arboretum on the site. These will enable visitors to learn more about the trees that grow there, and children can take rubbings of the metal signs. A revised leaflet to the site also now guides visitors around the many features of Spring Wood.

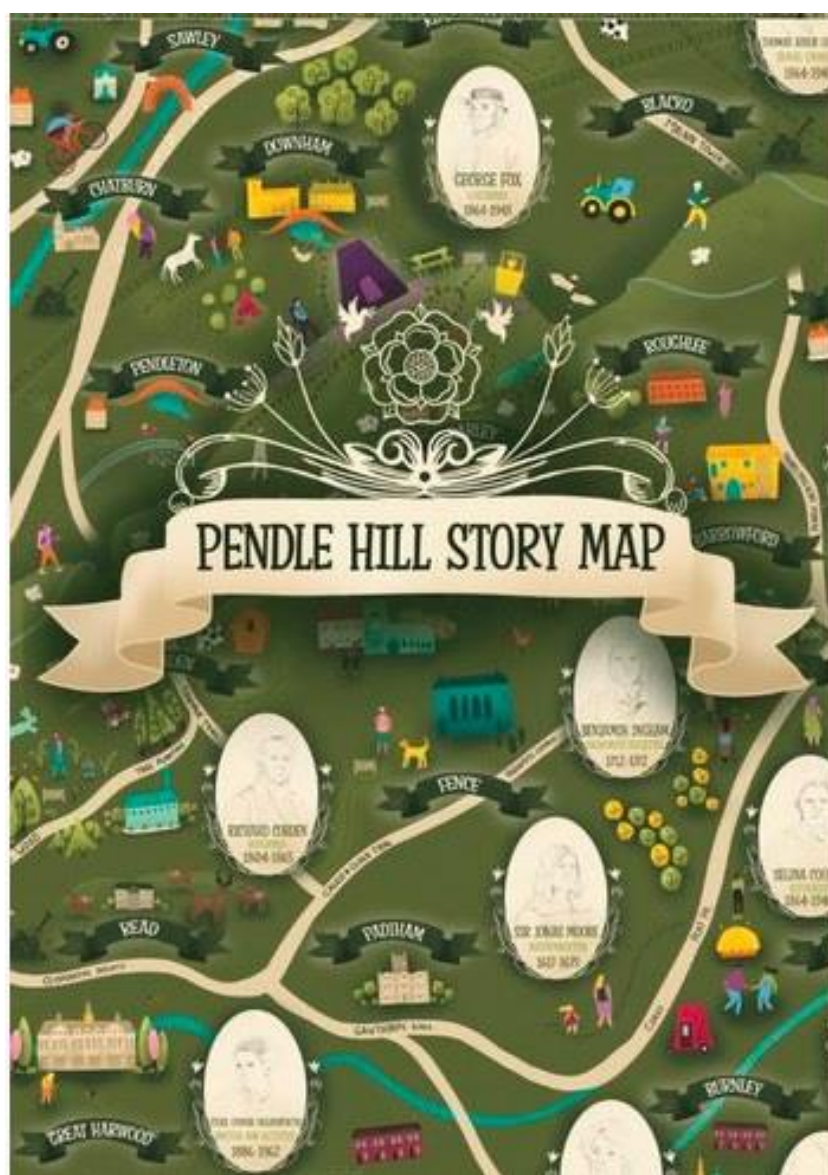


Quarterly Report

We have re-designed and re-written the website www.pendlehillproject.com to make it an archive of the scheme. It now hosts resources, walking and cycling routes, project reports, videos and images. It also features our beautiful Story Map.



Can you spot these images on the map?



Staffing and Programme Management

The Scheme Evaluation has been completed by Simon Lees of Countryside Training Partnership, and this has detailed how we met our output and outcome targets, and describes achievements and lessons learned. A summary document is also available, and both will be available via our website once they are approved by the PHLP Board.

*From the observations, discussions and assessment of the information presented within this evaluation, the Pendle Hill Landscape Partnership Scheme demonstrates one of the best, if not the best, examples of a group of partners working together in a holistic, interdependent way to deliver a programme of activity that can truly demonstrate **“the whole scheme being greater than the sum of the individual parts.”***

Key quote from the evaluation

Similarly, a Legacy Plan has been produced, together with a capital assets register and web map to show key works on the ground <https://www.pendlehillproject.com/pendle-map>

Throughout January and February staff have remained hard at work completing final pieces of work and gathering financial records. This has been compounded by a switch over of the county council's financial system which effectively suspended all activity for 2 months! However, we are now ready to submit the final claim.

The PHLP Board meets for the last time on 22 February to discuss and approve the reports and then we can truly say the scheme has closed.



Thank you everyone for your support: flashback to the summit, Summer 2018