

PENDLE HILL  
LANDSCAPE  
PARTNERSHIP



## Quarterly Progress Report



Young Radical Explorers at Clarion House

April – June 2019  
Year 2 Quarter 1



TOGETHER FOR OUR LANDMARK



LOTTERY FUNDED

## Pendle Hill Landscape Partnership Team: Year 2

### Roles and Projects:

Scheme Manager: **Cathy Hopley**

- What's a Hill Worth
- Trainees

Community Engagement Officer: **Jayne Ashe**

- People Enjoying Nature
- Pendle Hill Fund
- Community Archaeology
- Volunteering and Learning (Into Volunteering)

Outdoor Learning Officer: **Alison Cross**

- Volunteering and Learning

Farming and Wildlife Officer: **Sarah Robinson**

- Wild About Pendle Hill
- Farmer's Network

Countryside Access Officer: **Sarah Dornan**

- Access for All
- Volunteering and Learning

Business Support Officer: **Sarah Brooks-Silcock**

Graduate Trainee (2018/19): **Jessica Tearle**

- Volunteering & Learning
- Traditional Boundaries

AONB Sustainable Tourism Officer: **Hetty Byrne (maternity leave Jun 19 – Mar 20)**

- Discover Pendle Hill
- Interpretation

- Programme Co-ordinator at In-Situ for The Gatherings: **Kate Houlton**
- Project Manager at Mid Pennine Arts for The Radicals: **Nick Hunt**
- Project officers at Ribble Rivers Trust for Pendle WINNS: **Richard Atton**
- Project Co-ordinator at DSWA for Traditional Boundaries: **Sue Manson**



## The Environment

### Restoring Traditional Boundaries

#### Boundary restoration

This quarter we have moved forward the selection and commissioning of boundary restoration contracts:

- Drafting and extensive circulation through DSWA and Pendle Hill LP contacts, websites and social media of a 'Call for Interest' for walling and hedging contractors to register an interest in quoting for the capital boundary restoration contracts.
- All farmers with shortlisted walls for capital restoration work were contacted and site visits arranged and undertaken by Sue Manson and Jessie Tearle.
- Priority selection of capital restoration walls to take forward to quote stage were then agreed with Cathy Hopley and Jessie Tearle of the Pendle Team
- Site visits were then undertaken on 7 June with Philip Dolphin, Master craftsman in a professional advisor capacity, to assess the suitability of the 6 shortlisted walls, in order to measure up and provide an outline cost estimate for the restoration of each wall.
- Drafting of the quote pack to be used to obtain quotes from contractors – this will go out in July for the walls, and August/Sept for the hedges

#### Skills training

3 days of beginners walling training was delivered on 21-23 June at Thorney Bank Farm, Roughlee which included a ½ day of training each for the People Enjoying Nature (PEN) group and Pendle Hill Partnership staff, plus a fully booked (10 people) two day beginners course for volunteers delivered by trainer Alan Rhodes. Toilets, brew space and camping facilities were kindly provided by the adjacent historic Clarion House. The beginners' course received excellent feedback, with a number of attendees expressing an interest to be involved as volunteers on future walling activities and 20m of wall was repaired.

Arrangements for the 10 day Level 1 walling course running on 31 July/1 Aug, 7/8, 14/15, 21/22, 28/29 Aug were finalised with Thomas Binns at Hecklin Farm near Downham and trainer Philip Dolphin. The course has been publicised widely on all mediums through Pendle Hill LP and DSWA networks and bookings taken by the LP team. Bookings have been good, reaching the maximum 10 places.



LP Team staff have a go at walling, with trainer Alan Rhodes





Beginners walling course set to work (left)  
...and show off their completed wall (below)



## Restoring Wildlife and Priority Habitats

### Clarion House Discovery site

Two volunteer days have been held at Clarion House – removing the hedge bottom Terram layer and also moving the hedging brash and using it as dead hedging material to bolster the outer hedge boundary of the site.

The nature library of ID books has been established at the Clarion and continues to grow with donations of second hand books. The Wildlife Sightings board is in place and being used by visitors.

One plant ID session has taken place on Sunday 2<sup>nd</sup> June, and the first Bioblitz event took place on Sunday 30 June, looking at minibeasts, butterflies and wildflowers. iRecord app used widely on the day.

Jane Jones from Butterfly Conservation visited Clarion House, Worsaw Hill and Ogden Reservoirs as potential sites for moths and butterfly monitoring and field visits by local BC members. Jane also attended the Clarion Bioblitz and will be setting up her moth trap for the next Clarion Bioblitz in August.



Green Hairstreak butterfly on Pendle, 2 May 2019



## Quarterly Report

Last autumn the first steps towards meadow restoration were taken at Cockshotts farm and at Clarion House, with soil testing taking place and yellow rattle seed being spread at both. We have now added in plug plants as well, which will establish slowly over time. The yellow rattle has taken really well and currently is in flower at both sites.

### Barley Wildlife Discovery site

Licence agreement with Pendle Borough Council, the site landowner, is now in place to enable management works to take place. Plans for the new access path have been confirmed and a contractor engaged (Terra Firma from Haslingden), all is now in place for them to start work in August. Path will be a long diagonal with a stone faced seating area close to each end.

### Worsaw Hill

Four workshops have been held at Worsaw Hill – two arts workshops with Keith Parkinson from Atelier Arts and two limestone flora ID with Claire Cornish. A total of 15 people came on the arts workshop and 10 on the ID. One of the groups which came to the arts workshop were from the Care farm project at Lower Gazegill farm



Limestone flora ID workshop



Artists and botanists at Worsaw Hill



## Creating and Managing Woodlands

Following completion of the tree planting season the main activities for this period have been to complete reports and compile lessons learnt ahead of the next season. This also include adjusting the project to be a 3 year tree planting programme, and following the departure of our lead on Pendle WINNS (Michelle Tierney), we have adjusted the project to have a planting and INNS volunteer supervisor (Rob Cooper) and to recruit a woodland lead (part time on Pendle WINNS), we will look to appoint in July and for them to commence before the end of September 2019).

### Woodlands

We have begun preparations for tree planting sites in 2019/20, with a focus on Whitaker Clough, Cold Coates and Twiston, and finally a new site on Pendleton Brook downstream of Swardean. The sites have been agreed in principle with landowners, and over the next quarter we will be finalising details with the owners, as well as with the rest of the Pendle Hill LP team ahead of commissioning fencing and preparing planting plans.

### INNS

Rob as the new lead on the INNS (invasive Non Native Species) part of the project has reviewed the INNS plan and begun Himalayan balsam control days with volunteers from the Rivers Trust and PHLP at Crow Wood, Barley and Swanside (in line with last years activity). He has also contacted the Huntroyde Estate.



Swanside Beck before (left) and after (right) the volunteers removed the Himalayan balsam

## Restoring Footpaths and Repairing Peatland on the Summit

### Mearley path & peat restoration

This work is in partnership with Ribble Rivers Trust and their WEG (Water Environment Grant) project. We visited the site with specialist contractors Conservefor for them to produce a spec for the path. Next steps are for RRT to let the tender for the path and peat restoration works, with £20,000 from our Access budget paying for the path, we will also offer technical support as they need it.

### Summit restoration works

The peat restoration works were completed with lime, moorland seed and fertiliser being spread onto the bare peat areas in the peat pans and on the re-profiled slopes. These areas were also covered with heather

## Quarterly Report

brash and plug plants put in. This was all completed by Conservefor, but they did hold back some brash and plug plant material for us to use with our volunteers and the Police cadets. The engagement day was amazing!! Kerry Morrison, artist in residence, also came for the day and encouraged walkers to bring the plug plants up the hill, two by two, and bring them to us. Lots of people got stuck in planting their plants and wanting to know what we were doing. Lots of conversations about peat, carbon, climate change, composting. The police cadets came the following day and finished off the brash spreading and plug planting. There were 24 of them and they worked really fast! We set them challenges to keep them motivated – the best one was splitting them into two groups to see which group could build a 3 metre stone dam the fastest!

The summit stones were transported to site and installed on 10<sup>th</sup> April, and the Summit film was re-edited and released to reflect the completion of major works on this site.

Final claims for grant payments have been made to Lancashire Environmental Fund and the LEADER grant.



Staff and volunteers carry plants up the hill, ready for planting into the bare peat at the Engagement Day





## The Economy

### Enhancing Visitor Gateways and key routes to Access Heritage

#### Accessing the Hill

250m of the Pendle Way path leading to Pendle Hill from Barley was improved and funded by the AONB and Pendle borough council. The field was becoming impassable when wet and the newly subsoiled path helps to manage the visitor impact on this field and benefits the farmer who can now better manage the field for grazing.

#### Chatburn to Downham concessionary bridleway

Unfortunately Planning Permission has been delayed again for the Downham Concessionary Bridleway following a long site visit with Lancashire County Council Highways Department. A decision has been made by Ribble Valley Planning Department to take this to a planning committee which will now be heard in August. Potential alterations to the plans are being prepared in advance of this meeting.

#### Footpath volunteers

Following volunteers week there has been a boost of interest in Promoted Routes Volunteering, there are now 5 new volunteers interested and a training session is currently under preparation.

Promoted Routes are now being updated on to the View Ranger Website and in the first month of the 'Downham Circular 2' route being re written, digitised and published by Jessie there have been 23 downloads already.

A meeting has been held with a local pub to discuss creating a new promoted route from Worston to a lesser used area of the hill. The pub is open to offering their car park for walkers to use as a starting point in return for promotion of their business.

#### Geology interpretation

Meetings have been held with GeoLancashire to discuss a geological timeline feature. This was originally planned for Barley but now potentially for the car park near to the Nick of Pendle to draw people to another area of Pendle Hill. GeoLancashire have been asked to offer a brief for providing advice and assistance to source stone and prepare interpretation and a walk linked with local history.

#### Spring Wood

Site meetings have been held with Lancashire County Councils Asset Manager for Spring Wood Information Centre, he has been issued with a briefing note of the project plan for PHLP and he is now establishing other parties of LCC who also have an interest in the site. A steering group is being set up to develop this aspect of the project.

#### Barley to Roughlee All Ability route

Site meetings have been held to discuss the new access for all route from Barley along Heys Lane to link to Roughlee, and back along the riverside. This will include a new funding bid to Lancashire Environmental Fund and involve the 2 parishes and the Pendle Rights of Way officer who is looking at options including a dedication of a new right of way or diversion of current right of way. We are also talking to this officer about another Aitken Wood link, involving a creation order rather than a concessionary route.

## Offering Apprenticeships

There are still no trainees in place, although we nearly had one apprentice appointed this quarter but it fell through. Staff shortages at Myerscough College are delaying further recruitment. A review of the project has been agreed with partners and our Monitor, to be held in Oct 2019, and we will still work to try and recruit trainees until then.

However, To date we have hosted 2 graduate traineeships, 1 'year in industry' placement at MPA, and are on our 4<sup>th</sup> summer internship for the archaeology project from UCLan: making up 7 of the 20 training placements required as outputs for this project.

## Sense of Place and Sustainable Tourism

Hetty went on maternity leave at the beginning of June, leaving a number of freelance contracts in place for Cathy to manage in her absence. These are:

### Sense of Place Toolkit

Hetty had carried out face-to-face and on line surveys of people's feelings about, and favourite aspects of, the Pendle Hill area. These are to be developed into a toolkit for businesses locally which will enable tourism business to better describe and 'sell' the area's heritage and landscape as part of a sustainable tourism offer. This development work which includes interviews, photography and copy writing is being carried out by Mark Sutcliffe of Salar Media and will be completed by the end of 2019.

### Dark Sky Tourism

Extending the successful work carried out elsewhere in the AONB, local astronomer, Robert Ince will be surveying the night skies around Pendle to identify potential 'dark sky discovery sites' which tourism businesses can then learn about and promote.

### Treasure Trails

Stuart Marshall of Treasure Trails has been working with 4 local primary schools, with support from Alison our Outdoor Learning Officer. (See under Volunteering & Learning.) The trails are printed quiz leaflets following a route of heritage sites around a village to reach the 'buried treasure'. The leaflets will go on sale locally, and additional funds raised through local advertising and the sales go to the AONB charity, Champion Bowland, to fund future re-prints of the leaflets.



Pupils involved in developing a treasure trail for Barrowford village



# Commissioning Research into the value the landscape offers to the economy and community services

The 3 strands of the work have progressed well this quarter as follows:

## 1. Natural capital and ecosystem services mapping

This study is being progressed by the AONB with input from a GIS specialist, with the intention of producing mapping of the entire AONB and LP area. The LP area mapping will then be of use to the 'farming for public goods' research. This work has been delayed due to technical issues, but we hope to get it back on track in Q2.

## 2. Farming for Public Goods research

After research and consultation a brief has now gone out to tender for consultants to carry out this study into **how we can value natural assets, or public goods, to deliver investment in farming (public money)**. Three consultants put in a quote and 3 farmers have committed to being part of the study. The chosen consultants will start work in September and work on this for 12 months.

## 3. Valuing the landscape for our health & wellbeing research

This 2 year study has been developed and is now commissioned. Kirsty Rose-Parker aka The Evaluator, will be undertaking research over the next 2 years looking at **how our levels of connection to nature correlate with our levels of wellbeing**. She will work with our own PEN project as well as other local initiatives which seek to reduce stress, isolation and low mood/depression through outdoor activity, and identify how we measure the impact of these activities. This work will feedback to the public health services and NHS commissioners to support their work in this developing and important area. The image below shows a tool which Kirsty is developing to aid measuring our connections to nature.

### 72 Seasons in PENDLE



# Everyone

## Running a Community Grant Scheme

Year 1 applicants now underway with their project activity:

- Higham Parish Council – due to personal circumstances this project has been delayed. We are now trying to follow up to find out progress.
- East Lancs Clarion Choir – project is now fully underway, volunteers have been trained up and sessions are now being advertised for later on in the summer.
- Burnley Football Club in the Community – trying to find out more about this delayed project. If the project has not started by end of July, then there is a high risk that project will not meet outputs.
- Community Arts by ZK – project expected to finish early July. The project, called 'Rise Up' has been a great success.
- Pennine Lancashire Community Farm – project has been ongoing.
- Roughlee Parish Council – project now complete.
- Brierfield Action in Community – after changes in the applicant's funding and structure, a decision was made to withdraw our funding for now.



Roughlee Habitat project – new interpretation board





ZK Arts – Rise Up project visiting the Pendle hill area for artistic inspiration

We have started to think about plans for Year 2 and the Fund will re-open for applications on 18<sup>th</sup> August. Panel members were re-appointed at the end of June, with the addition of two new members.

## Providing Supported Activity Sessions for people dealing with mental health issues and social isolation

We have now completed 2 blocks of PEN activity from 28<sup>th</sup> March to 2<sup>nd</sup> May and from 30<sup>th</sup> May to 4<sup>th</sup> July doing a range of activities:

- Walking up Pendle Hill to view the Summit works and the stones in-situ
- Maintaining the new paths on the hill: clearing the water bars
- Helping a local farmer at lambing time
- A Radicals walk and banner designing with MPA
- Kick sampling at Sabden brook with the Rivers Trust
- Conservation work at Spring Wood wildflower meadow
- Learning about Hedgehogs and other small mammals
- Drawing with Cath Ford
- Walk around Gisburn
- Dry stone walling taster session
- Wildflower ID at Clarion House
- Balsam pulling

Only one session was cancelled because of bad weather, however it was rearranged for within the same block of activity.



PEN activity sessions walking and working in the landscape



The PEN group out on a 'Radical walk' with Faye

### Other links

Nick from NHS Community Restart has made links with the mental health ward at Chorley Hospital and we are currently planning two PEN sessions for a group of in-patients for later on in the summer. Jayne attended Lancashire Care Foundation Trust's 'Time to Shine' event and showcased PEN work on a stall.



## Creatively Engaging People in our Radical History

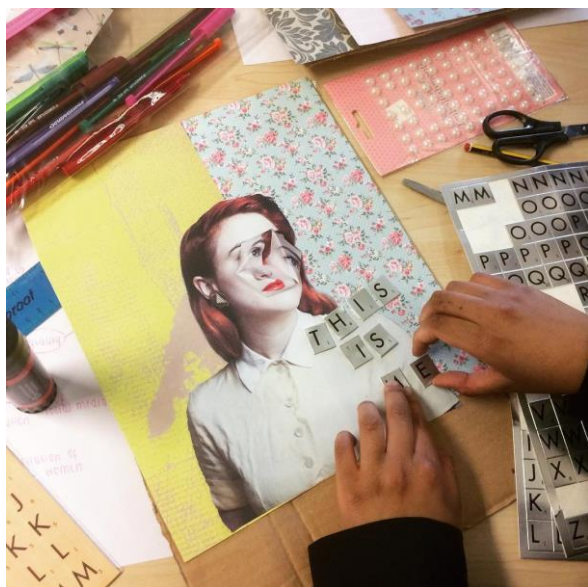
**Mid Pennine Arts** continue to support groups of volunteer researchers in exploring various stories and themes related to the expanding cast list of Pendle Radicals. Volunteer contributors share information via the dedicated Facebook group and the project blog: <https://pendleradicals.wordpress.com/>

### Ethel Carnie Holdsworth

The new sound recordings we commissioned of selected Ethel poems have now been uploaded to the National Poetry Archive. We marked this occasion in June with a celebratory launch event at Great Harwood Library, where the young Ethel acquired the habit of reading. Special guests included Dr Nicola Wilson of Reading University, an authority on her writing, as well as her biographer Roger Smalley, and two surviving members of Ethel's family. This shared event also marked the latest ECH novel reissue from Boyd & Kennedy publishers, a series that Nicola edits. Feedback from the capacity audience was very positive.

### National Banner Exhibition

Much work this quarter has focused on the visual culture of protest banners, working towards a large scale exhibition in October at Brierfield Mill, for the British Textile Biennial. Our group continues to work on sourcing a national selection of diverse banners. In June we organised an inspirational group visit to the Peace Museum in Bradford. This subject has also inspired some lovely sessions of participatory work, at Marsden Heights School (Faye working with Alison) and also at Burnley's women's refuge. Our intern Faye, in her final quarter, led a variety of inspired sessions (also a PEN session, and Colne Brownies) and also gave the Mobile Hut an early outing with the pop up exhibition from the Marsden Heights sessions.



Work in progress, and a completed banner created by GCSE Textile students at Marsden Heights

### Quakers

In April we supported our borough council colleagues in welcoming the global best-selling author Tracy Chevalier (Girl with a Pearl Earring), to walk the hill in the footsteps of George Fox, as a foretaste of the two councils' ambitions to promote a new Quaker themed walk. Wendy Hampton from Clitheroe Quakers joined us. We are contributing to the costs of documenting the day. Graham Kay filmed the expedition and a short film is in preparation.



Two stills from the Tracy Chevalier visit, later featured in Lancashire Life and other local news

## Two Toms

A trio of volunteers have also been researching the politics of the outdoors (Tom Stephenson and Thomas Arthur Leonard), scoping out a new walking route linking the stories of these two pioneers, from Whalley across the hill to Colne, where Leonard was a minister. Our volunteer Nick Burton has also devised a circular Chartists walk from Sabden, which we will present during Pendle Walking Festival, with dramatized readings of original texts.

## Paul Graney

Jennifer Reid, singer and researcher of industrial ballads, gave introductory talks at three village halls about the archive of pioneer sound recordist Paul Graney. She aims to follow up with the forming of a Lancashire dialect group.

Our design partner Axis is continuing detailed design work towards the development of the Radicals Trail. Unavoidable circumstances have delayed this work, but it will soon introduce a visible footprint for the project, with interpretation at a first six sites, as well as a stronger online presence for Pendle Radicals, with the introduction of a dedicated website.

## Delivering Community Archaeology sessions and related training

### Community Archaeology Forum

Held on Tuesday 23rd April at Clitheroe Castle Museum, the forum started with talks from 4 different sets of speakers and then members of the public were also invited to a drop in event later on. Local history groups and the Pendle Archaeology groups were invited to put up their own displays and provide information about upcoming events and activities. It was a successful evening and we will look for a bigger venue next year to accommodate more visitors and volunteers.

### Training

NAA organised a QGIS (digital mapping software) training session, led by Chris Atkinson. This gave participants the opportunity to learn more about the software and how it is used for archaeology. Rebecca then led a Built Heritage survey in June.



### **UCLan Intern**

Over this quarter we were involved in the selection of this year's UCLan Community Archaeology intern for the PHLP. The focus this year will be developing and delivering a number of community archaeology outreach sessions to closed groups and open to the public. Danielle Knights was appointed as the intern and she started on 24th June. Her internship finishes on 16th August and she has already planned session ideas and themes. We have at least 10 sessions planned for this time period.

## Threads

### Supporting Volunteering and Learning opportunities across the scheme

#### Get into Volunteering

There have been a number of Get into Volunteering sessions this quarter with the local Lancashire Police Cadets. We supported 26 cadets on the Summit in April, where they helped us continue some peat restoration and do a large litter pick. The Pendle and Burnley Cadet Units then built bird boxes over a series of four evening sessions in April and May. We hope these sessions encourage more young people from diverse backgrounds to continue volunteering in some capacity in the future.

Planning has taken place for more sessions for groups later on in the year.



Lancashire Police Cadets getting into volunteering

#### Volunteering

The Volunteer Toolkits were launched in Volunteer Week in June, and have been given out since to new and existing volunteers. After some evaluation work, the decision was made to reassess and re-plan the Pendle Hill Volunteers programme over May. Volunteer activity restarted in mid-June. The Volunteer Programme now includes activity programmed until the end of February 2020, and are freely available online and will be distributed locally. The programme also involves a booking system for some sessions to alleviate any parking issues which cause pressure on some sites, and also to help staff to prepare for each session more effectively.

Volunteer Week included an evening introduction session to volunteering which was well attended with approximately 10 new volunteers taking home volunteer toolkits, they expressed interest in practical volunteering and promoted route volunteering.

Pendle Hill Volunteer sessions have been well attended by regular volunteers and have continued with sessions at Clarion House, Spring Wood and Barley, with tasks ranging from dead hedging to early balsam clearance.



### Informal outdoor learning

This quarter eight free family nature events have been delivered for local families. The themes of these sessions were Flower Power, Minibeast Madness (in collaboration with Ribble Rivers Trust), Super Spring, and a session was delivered with Mid Pennine Arts' Pendle Radicals project, at the Clarion. One Bio-Blitz session was also delivered as part of the Wild About Pendle Hill project. All sessions were fully booked, but numbers dropped on the day due to poor weather. Comments such as "Thank you my boys enjoyed themselves" "We had a lovely time thank you".

### Little Saplings

We have delivered 12 Little Saplings events, with 2 taster sessions at toddler groups. These taster sessions have provided a stepping stone for families to attend the main Little Saplings sessions in parks near them. We even ran a Saturday Little Saplings, which allowed those parents to attend who can't normally attend a weekday. Sessions are now becoming nearly fully booked in the morning.



Little Saplings activities: Dad den building and mud kitchen

### Outdoor learning with schools

This quarter we have been working on the creation on two Treasure Trails (as part of the **Discover Pendle Hill Project**), one in Barrowford and one in Sabden. Working with Stuart from the Treasure Trail company to deliver 4 sessions with local schools. In Sabden we worked with 19 year 5 children, and in Barrowford we worked with 9 year 5s from both Barrowford Primary and Barrowford St Thomas primary. The pupils were fully involved in finding out what treasure trails were by using an existing trail in Downham; walking the proposed treasure trail route around their village; creating stories; researching village facts and coming up with clues for each picture; and finally drawing cover designs.

The treasure trails are currently in the testing and printing stages before being printed in July. The schools all gave very positive feedback, and the Barrowford schools said they would use the experiences for orienteering and small school ground treasure hunts.

The outdoor learning officer has also been working with Mid Pennine Arts on the **Pendle Radicals** project. We worked with 8 students from Marsden Heights year 10 textile group to create protest banners over a 7 week period. The students were exploring the topic 'Banners, Protests and Campaigning.' This linked to the change makers and radical thinkers of the Pendle Hill area, such as English Suffragist Selina Cooper and British Suffragette Ada Nield Chew. This provoked the students to think about what these powerful and brave women would be fighting for today and what issues they feel strongly about. The 4 banners were displayed in the Pendle Hill Mobile Hut for members of the public and the students and teachers to come and see. Everyone was really impressed with the outcome and the students work

### Embedding outdoor learning into chosen schools (from both sides of the hill)

Since April the outdoor learning officer (OLO) has worked with 6 schools to assist them to embed outdoor learning within their school and grounds. Each school worked with was offered 6 half days of the OLO time, to either deliver outdoor lessons at school grounds, upskill teachers or deliver trips within the PHLP area. Trip themes were minibeasts, plants and soils, local history and geography, sensory exploring and landscape art.

**Simonstone school** EYFS and year 1 class went to Spring Wood for the day for a sensory and art session. The head teacher said "All the activities could be/and will be replicated using our school grounds. I particularly liked the photographs of Andy Goldsworthy/environmental sculptures and how these were used to inspire the children to create their own. I feel that some of the activities could also be used with the older children and we will adapt them."

**Holy Saviour school** learnt how to hunt for minibeasts within their school grounds and at the Clarion house. **Barden school** have had sessions within their school woodland area which they currently don't use, about plants and minibeasts with 120 children.

**Earby Primary school** had trips half way up Pendle Hill, where they learnt how to use compasses and look for physical and human features. Year 2 teacher said "We will plan these sessions into our long term plans and will share ideas with other staff members. Geography field trips will be planned to Pendle Hill on a bi-annual basis."

## Holding the Gatherings and annual events to engage new audiences

### Mobile Hut

Artist Nick Wood has completed the manufacture of the Pendle Hill Mobile Hut and delivered it to The Garage where it will now be based until taken out on tour in and around the Pendle Hill area. The Public launch of the Pendle Hill Mobile Hut took place on Saturday 25th May 2019 as part of A Gatherings Event. It is now a resource that can be used by the whole Pendle Hill Partnership as a touring interpretation hub creatively presenting and sharing information about The Gatherings programme.

The Mobile Hut will embark on a tour around the Pendle Hill area throughout summer 2019, visiting and 'popping up' at a range of different but well established events from the Clitheroe Food Festival (10.08.19), to a Free Family Nature Event in Whalley (29.08.19).

The aim is for the hut to develop its own personality and persona and for it to become a well-known and loved presence in the Pendle Hill area. Following a busy summer of events and activities the idea



is to recruit another artist to take up a residency using the Mobile Hut to explore Pendle Hill and to creatively map the surrounding areas.

### The Gathering: May 25<sup>th</sup> 2019

In-Situ and the PHLP team hosted the first public Gathering event at The Garage, Brierfield. The event was free and open for audiences to drop in and stay as long as they wanted to. The event included a presentation of the Material Culture Unearthed film and a performance by the artists, a talk from Artist **Kerry Morrison**, introducing the Peat Project followed by a Peat Pie tasting and the launch of the Mobile Hut involving artist **Nick Wood**.



Kerry Morrison (left) tests out her Pendle Pie on willing volunteers, Nick Wood opens the Mobile Hut (right)



Talkaoke session at the Gathering Event, and the new Pendle Hill Mobile Hut

Attendees were also invited to contribute to the Pendle Hill Memory Map: What the Hill Heard by providing an anecdote, fact, memory or drawing that Pendle Hill has witnessed.

There were also family friendly free activities throughout the day including talkaoke inspired by personal experiences of Pendle Hill, an introduction to dry stone walling and opportunities to learn more about the PHLP.

It was a busy event which saw of 60 guests attend, and it helped to increase support and interest in

## Quarterly Report

The Gatherings programme. Due to the location of the event it attracted visitors from the Nelson and Brierfield side of the hill so the team are considering a different location for the next Gathering event scheduled for 2020.

### Beyond the Dig

**Lunchtime Practice** have been appointed as the artist collective involved in the Beyond the Dig – our new Community Archaeology Outreach Artist In Residence Programme. Lunchtime Practice have had several meetings with the project team and confirmed their programme of activity. The artists would like to attend most of the community outreach sessions, to give them the opportunity to develop the most authentic response to creatively documenting the project.

## Co-ordinating Interpretation and Publicity

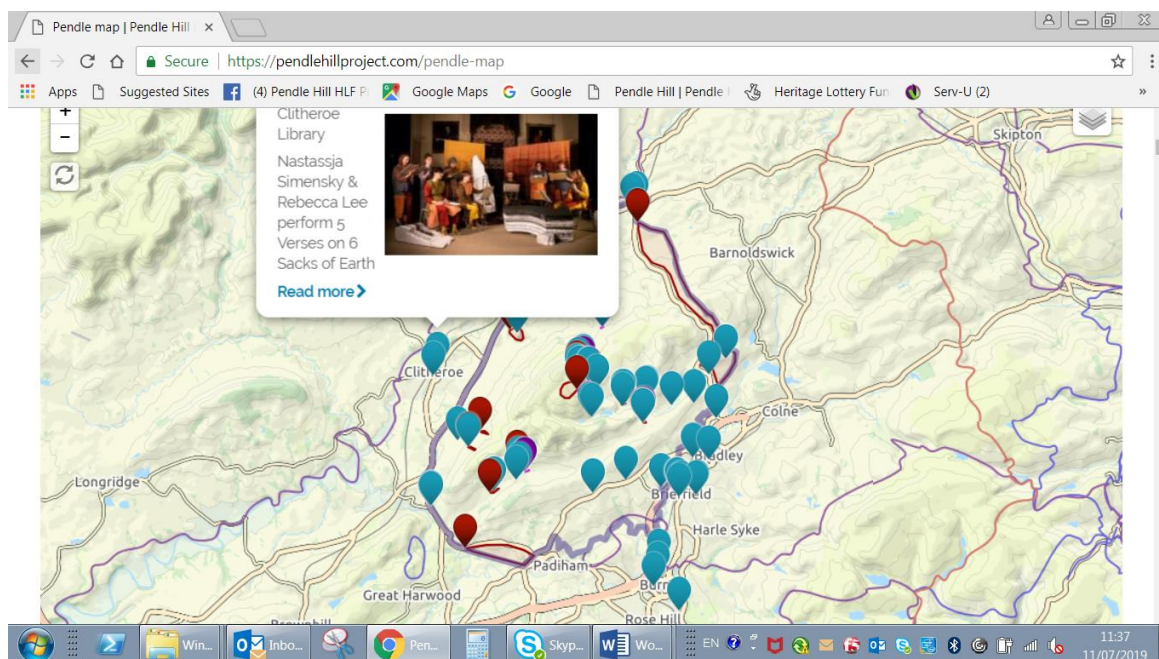
Production and installation of the Summit interpretation board is now complete:



Sarah Dornan (Access Officer) and Jessie Tearle (Grad Trainee) put up our new sign

Development and production of an interactive webmap for year 1 activity – this was developed by the team using newly acquired GIS skills, this shows all our project activity and work sites from the first 12 months, including the schools worked with, and community groups benefitting from Pendle Hill fund grants: <https://pendlehillproject.com/pendle-map> designed by Countryside





Screenshot of the interactive map showing a project information pop up

A volunteer programme leaflet has been devised and printed, advertising the next 5 months of volunteer activity. This is being distributed via regular outlets and groups around the area and has already brought in new volunteers to the group.

## Staffing and Programme Management

Fleet management have been procuring and preparing our scheme vehicle – liveried for the LP with HF logos included: this should be ready to use early in Q2

Drafting of JD for the next Graduate Trainee who will be recruited over August and appointed in Sept/Oct 2019 for 12 months, when Jessie's contract will be coming to an end.

Drafting of brief for the mid-term and final scheme evaluations, to be commissioned in Q3 and ready to start work by the end of Y2.

End of year 1 to 1 reviews with all team members, regular diary and team meetings



## Activity report

PROJECT	About the Session				About the Participants		About the Activity		
	Date	start and end times	duration (hours)	Activity type	Location	Total Adults	Total Children or students	Name of organised group, if relevant	Description of the activity
Traditional boundaries	21/06/2019	09.00 - 12.00	3	Team building for staff (walling training)	Thorney Bank Farm, Roughlee, Burnley, Lancs, BB12 9LL	6	0	Pendle Hill Landscape Partnership	1/2 day Dry Stone Walling training
	21/06/2019	13.00 - 16.00	3	Taster session for volunteers (PEN group)	Thorney Bank Farm, Roughlee, Burnley, Lancs, BB12 9LL	8	0	People Enjoying Nature (PEN)	1/2 day Dry Stone Walling training
	22/06/2019	09.30 - 16.00	6.5	Training for volunteers (Beginners walling training)	Thorney Bank Farm, Roughlee, Burnley, Lancs, BB12 9LL	10	0	public	Day 1 of a 2 day Beginners Dry Stone Walling training
	23/06/2019	09.30 - 15.00	5.5	Training for volunteers (Beginners walling training)	Thorney Bank Farm, Roughlee, Burnley, Lancs, BB12 9LL	10	0	public	Day 2 of a 2 day Beginners Dry Stone Walling training
Wild about Pendle	02/06/2019	12.00 - 16.00	4	plant ID	Clarion House	8.00	0.00	public	recording on iRecord
	19/06/2019	10.00-14.00	4	arts workshop	Worsaw Hill	12.00	0.00	public	Arts workshop 'look down, look out, look up'
	19/06/2019	10.00-14.00	4	arts workshop	Worsaw Hill	3.00	0.00	public	Arts workshop 'look down, look out, look up'
	22/06/2019	10.00-14.00	4	plant ID	Worsaw Hill	5.00	0.00	public	limestone grassland plant ID
	22/06/2019	10.00-14.00	4	plant ID	Worsaw Hill	5.00	0.00	public	limestone grassland plant ID
PEN	28/03/2019	12.00 - 16.00	4	PEN session	Barley to Downham	8.00	0.00	PEN project	Walk over hill from Barley to Downham
	04/04/2019	13.00 - 16.00	3	PEN session	On hill	13.00	0.00	PEN project	Path maintenance on cart track
	11/04/2019	13.00 - 16.00	3	PEN session	Pasture Farm, Barrowford	7.00	0.00	PEN project	Farm session
	18/04/2019	13.00 - 16.00	3	PEN session	Clarion House	9.00	0.00	PEN project	Pendle Radicals - Banner session
	25/04/2019	13.00 - 16.00	3	PEN session	Sabden	7.00	0.00	PEN project	Rivers Session
	02/05/2019	13.00 - 16.00	3	PEN session	Spring Wood	11.00	0.00	PEN project	Bluebells and seed planting
	20/06/2019	13.00 - 16.00	3	PEN session	Sabden	7.00	1.00	PEN project	learning more about hedgehogs and building hedgeh
	06/06/2019	13.00 - 16.00	3	PEN session	Martholme Greenway, Simonstone	13.00	0.00	PEN project	Drawing Walk with Cath Ford
	13/06/2019	13.00 - 16.00	3	PEN session	Gisburn to Rimington	9.00	0.00	PEN project	Walk from Gisburn to Rimington
	21/06/2019	13.00 - 16.00	3	PEN session	Thorneybank Farm, Roughlee	8.00	0.00	PEN project	Dry stone walling
	27/06/2019	13.00 - 16.00	3	PEN session	Clarion House	11.00	1.00	PEN project	Identifying and recording different species
	04/07/2019	13.00 - 16.00	3	PEN session	Spring Wood	11.00	0.00	PEN project	Himalayan balsam pulling
The Gatherings	25/05/2019	12:00:00	3	A Gathering - 25/05/19	The Garage, Brierfield	45.00	25.00		Public sharing of The gatherings Programme Y1 & launch of Mobile Hut

PROJECT	About the Session				About the Participants		About the Activity		
	Date	start and end times	duration (hours)	Activity type	Location	Total Adults	Total Children or students	Name of organised group, if relevant	Description of the activity
	25/06/2019	11.00-14.00	3	Event - FEMALE exhibition	The Garage, Brierfield	16.00	5.00	Marsden Heights School	FEMALE' exhibition of MH students work
	10/05/2019			Volunteer Training session	Peace Museum, Bradford	4.00		Radicals volunteers	Banner research trip
	17/05/2019	18.30-20.00	1.5	Dialect Event	Barley Village Hall	4.00		public	Intro session for Lancashire dialect group
	30/05/2019	18.30-20.00	1.5	Dialect Event	Pendleton Village Hall	3.00		public	Intro session for Lancashire dialect group
	31/05/2019	18.30-20.00	1.5	Dialect Event	Sabden St Nicholas Church Hall	18.00	1.00	public	Intro session for Lancashire dialect group
	07/06/2019	17.30-19.30	2	Poetry event	Great Harwood Library	55.00	1.00	public	A celebration for ECH poetry inclusion into the National Poetry Archive
	19/06/2019	18.00-19.30	1.5	Brownie group session	St Holy Trinity Community Centre, Colne	20	20	Brownies	Pendle Radicals Explorer themed session - particularly teaching about Ethel Carnie Holdsworth to help them gain their local history badge
	03/05/2019	13.00-14.30	1.5	Banner making session	Jane's Place Women's Refuge	3		Jane's Place Women's Refuge	Banner making workshops
	20/05/2019	17.30-19.00	1.5	Training session	Jane's Place Women's Refuge	8		Jane's Place Women's Refuge	Banner making workshops
	18/06/2019	15.00-17.00	2	Training session	Jane's Place Women's Refuge	5		Jane's Place Women's Refuge	Banner making workshops
Community Archaeology	23/04/2019	14.00 - 17.00	3	Community Archaeology Forum	Clitheroe Castle Museum	25.00	0.00	public	Community Archaeology Forum - talks
	23/04/2019	17.00 - 19.00	2	Community Archaeology Forum	Clitheroe Castle Museum	20.00	0.00	public	Community Archaeology Forum - drop in displays and
	15/05/2019	10.00 - 16.00	6	Community Archaeology Training Session	Gisburn Festival Hall	5.00	0.00	public	QGIS training session
	12/06/2019	10.00 - 16.00	6	Community Archaeology Training Session	Barrowford Heritage Centre and Newchurch	9.00	0.00	public	Built Heritage training session
Vol and Learning	09/04/2019	10-3.00	5	LO ECT/Radical	Clarion	8	13	public	free family nature events
	10/04/2019	10-11.30	1.5	Little Saplings	Spring wood	5	6	public	Little Saplings
	10/04/2019	1.30-3.00	1.5	Little Saplings	Victoria Park	15	16	public	Little Saplings
	11/04/2019	10- 12 pm	2	Family Nature event	Spring wood	15	24	public	Free Family nature event
	11/04/2019	1.30-3.30	2	Family Nature event	Victoria Park	18	38	public	Free Family nature event
	18/04/2019	10-12 pm	2	Family Nature event	Spring wood	13	25	public	Free Family nature event
	18/04/2019	1.30-3.30	2	Family Nature event	Victoria Park	9	24	public	Free Family nature event
	24/04/2019	10-11.30	2	Little Saplings	Spring wood	10	10	public	Little Saplings
	24/04/2019	1.30-3.00	2	Little Saplings	Victoria Park	4	4	public	Little Saplings
	25/04/2019	10-11pm	1	LO ECT	The Leisure Box	3	4	public	1st session of Little Saplings

# Quarterly Report

PROJECT	About the Session				About the Participants		About the Activity		
	Date	start and end t(s)	duration (hour)	Activity type	Location	Total Adults	Total Children or students	Name of organised group, if relevant	Description of the activity
	25/04/2019	3-4.30	1.5	LO ECT/ Radical project	Marsden Heights school	1	8	Marsden heights (yr 10 textiles)	school trip
	26/04/2019	9.30-2.30	4	LO ECT	Barley	4	22	Earby Springfeild (year 2s)	school trip
	29/04/2019	9.30-12.00	2.5	LO ECT	Barden school	3	24	Barden primary (year 4)	school trip
	29/04/2019	1.-2.30	1.5	LO ECT	Barden school	4	29	Barden primary (year 4)	school trip
	02/05/2019	9.30-12.30	3	LO ECT	Earby Springfield school	3	22	Earby Springfeild (year 2s)	school trip
	02/05/2019	1.00-2.30	1.5	LO ECT	Earby Springfield school	4	27	Earby Springfeild (EYFS)	school trip
	02/05/2019	3-4.30	1.5	LO ECT	Marsden Heights school	1	7	Marsden heights (yr 10 textiles)	school trip
	03/05/2019	9.30-11.30	2	LO ECT/discover PH	Downham	5	18	Sabden primary	school trip
	07/05/2019	9.30-11.30	2	LO ECT/discover PH	Sabden village	5	18	Sabden primary	school trip
	09/05/2019	3.00-4.30	1.5	LO/Radical	Marsden Heights school	1	6	Marsden heights (yr 10 textiles)	school trip
	15/05/2019	1.30-3.30	2	Little Saplings	Victoria Park	19	28	public	Little Saplings
	15/05/2019	10-11.30	1.5	Little Saplings	Spring wood	8	10	public	Little Saplings
	16/05/2019	3.00-4.30	1.5	LO/Radical	Marsden Heights school	1	5	Marsden heights (yr 10 textiles)	school trip
	21/05/2019	9.30-11.30	2	LO ECT/discover PH	Sabden school	1	19	Sabden primary	school trip
	21/05/2019	1.00-2.30	1.5	LO ECT/discover PH	Downham	6	18	Barrowford st Thomas and Barrowford	school trip
	22/05/2019	1.00-3.00	2	LO ECT/discover PH	Barrowford	6	18	Barrowford st Thomas and Barrowford	school trip
	23/05/2019	3.00-4.30	1.5	LO/Radical	Marsden Heights school	1	4	Marsden heights (yr 10 textiles)	school trip
	24/05/2019	9.30-11.30	2	LO ECT/discover PH	sabden primary	1	19	Sabden primary	school trip
	29/05/2019	1.30-3.30	1.5	Little Saplings	Victoria Park	9	7	public	Little Saplings
	29/05/2019	10-11.30	2	Little Saplings	Spring wood	10	11	public	Little Saplings
	30/05/2019	10- 12.00	2	Family Nature event	Spring wood	9	24	public	Free Family nature event
	30/05/2019	1.30-3.30	1.5	Family Nature event	Victoria Park	2	5	public	Free Family nature event
	01/06/2019	10-11.30	1.5	Little Saplings	Spring wood	7	6	public	Little Saplings
	01/06/2019	1.30-3.00	1.5	Little Saplings	Victoria Park	11	10	public	Little Saplings
	03/06/2019	9.30-11.30	2	LO ECT/discover PH	Barrowford	4	55	Barrowford Primary (yr5s)	school trip
	06/06/2019	9.30-2.30	5	LO ECT	barley	5	28	Earby Springfeild (year 5s)	school trip
	06/06/2019	3.00-4.30	1.5	LO ECT/ Radical project	Marsden Heights school	1	3	Marsden heights (yr 10 textiles)	school trip
	17/06/2019	1.00-3.00	2	LO ECT/discover PH	Barrowford st thomas	2	17	Barrowford st thomas Primary (yr5s)	school trip
	19/06/2019	1.00-3.00	2	LO ECT/discover PH	Barrowford	6	18	Barrowford primary and barrowford st	school trip
	24/06/2019	9.30-15.00	5	LO ECT	Holy Saviour	10	60	Holy Saviour	school trip
	25/06/2019	9.30-15.00	5	LO ECT	Spring wood	7	20	Simonstone Primary (class1)	school trip
	26/06/2019	10-11.30	1.5	Little Saplings	Spring wood	25	25	public	Little Saplings
	26/06/2019	1.30-3.00	1.5	Little Saplings	Victoria Park	9	9	public	Little Saplings
	27/06/2019	2.00-3.00	1	LO ECT	primet church hall	7	11	Primet MU toddler group	Little Saplings
	28/06/2019	9.30-2.30	5	LO ECT	Clarion and barley	5	30	Holy Saviour (yr4)	school trip
	30/06/2019	10.00-13.00	3	Family Nature event	Clarion	4	6	public	Bio-Blitz FFNE
	02/06/2019	14.00 - 19.00	5	Volunteer meal and walk	Sabden	15	0	Volunteers	Volunteer celebration meal and walk
		<b>Total hours</b>	<b>220</b>	<b>total adults and children engaged =</b>		<b>793.00</b>	<b>870.00</b>		
				<b>total participants =</b>		<b>1663.00</b>			