

JOHN MUIR DISCOVER AWARD

Summer Holiday Family Challenge



Find a wild space near you

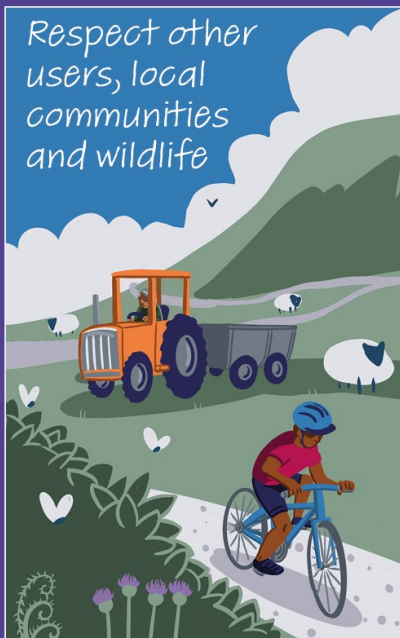
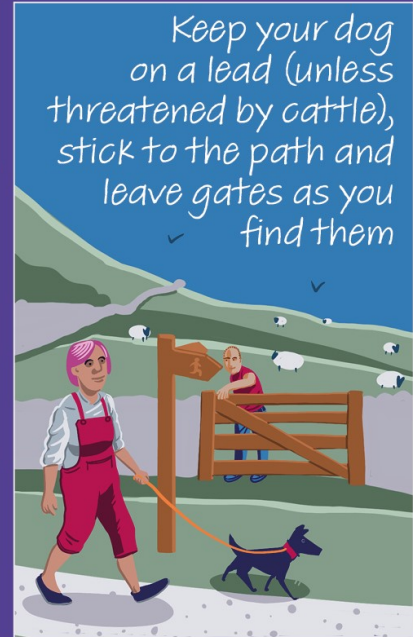
We would encourage you to leave your car at home as much as possible when doing your John Muir Summer Challenge – and explore your local area! Many of you will live in one of the towns surrounding the hill, and so we have gathered together some pieces of information about parks within these towns. This isn't an extensive list however, and we have not yet visited all of these places ourselves – so please ensure your families safety when visiting any public site. If you use OS maps, why not explore some of the Public Rights of Ways (footpaths and bridleways) close to where you live. Always ensure you stay only on public footpaths or bridleways, and do not trespass onto private land.

Please remember wherever you are exploring, follow the Countryside Code and respect the land you are walking on. At this time, also ensure you follow the current government guidelines and stay distanced from other path and park users .



RESPECT, PROTECT, ENJOY...

When in the countryside please:



**Thank
you!**

www.gov.uk/government/publications/the-countryside-code

Parks and Open Spaces

Ribble Valley

Wild space:	Spring Wood Picnic Site and Nature Reserve
Location (post code):	Near Whalley, Accrington Rd, BB7 9TD
Facilities on site or near by:	Car parking (parking charges apply), Toilets (when opened), disabled RADAR key toilet , blue badge holder bays, picnic benches (3 wheelchair access)
Wheelchair/pram access:	Paths from car park to wood are level, within woods there is accessible paths, but they all lead to high view point, so muddy and steep in sections. Further into woodland.
Any hazards:	Pond, which has fence around it. Shallow brook between woodland and golf course.
Habitats to discover:	Woodland, deciduous and evergreen trees, pond, brook, wildflower meadow and views over area
For further information head to:	https://www.lancashire.gov.uk/leisure-and-culture/country-parks-and-nature-reserves/picnic-sites/spring-wood/

Wild space:	Clitheroe Castle Grounds
Location (post code):	Clitheroe, BB7 1BA
Facilities on site or near by:	Car park in Clitheroe town, toilets (when open) within park grounds, benches, children's playground
Wheelchair/pram access:	Level paths within castle grounds, steep paths up to Castle keep, but pushchair and wheelchair friendly.
Any hazards:	Roads around the grounds
Habitats to discover:	Mixed woodland, large trees, community rose garden, field, hedges and garden flowers.
For further information head to:	https://www.ribblevalley.gov.uk/info/200286/arts_events_and_tourism/350/clitheroe_castle

Wild space:	Salthill Quarry Local Nature Reserve
Location (post code):	Salthill Quarry, Lincoln Way, Clitheroe, BB7 1QL
Facilities on site or near by:	Car parking bays along road, toilets in Clitheroe Town, some benches at summit and geology trail.
Wheelchair/pram access:	Easy access footpaths, some muddy, but
Any hazards:	A road runs between the nature reserve
Habitats to discover:	Exciting geology, limestone plants, wildflowers, woodland, and grassland.
For further information head	https://www.lancswt.org.uk/nature-reserves/salthill-quarry-local-nature-reserve

Wild space:

Location (post code):

Facilities on site or near by:

Wheelchair/pram access:

Any hazards:

Habitats to discover:

For further information head to:

Cross Hill Quarry Local Nature Reserve and Brungerley Park

Access from the West Bradford Road or via Brungerley Park, Clitheroe, BB7 4QF

Parking in Clitheroe town, public toilets in Clitheroe town, benches, and Ribble Valley Sculpture Trail,

Most of the footpaths in this mosaic of woodland and meadows are wheelchair-friendly.

Steep drops from paths running above quarry face. River Ribble runs parallel to the park

Woodland, small meadows, geology, river, limestone plant life and views over landscape

<https://www.lancswt.org.uk/nature-reserves/cross-hill-quarry-local-nature-reserve>

https://www.ribblevalley.gov.uk/info/200304/parks_and_open_spaces/995/

Pendle

Wild space:**Location (post code):****Facilities on site or near by:****Wheelchair/pram access:****Any hazards:****Habitats to discover:****For further information head to:****Barrowford Park**

Off Gisburn Road, Barrowford, BB9 6EW

Car park at Pendle Heritage Centre (charges apply) children's playground, Disabled toilets and other toilets within centre by café (when

Many of the footpaths are wheelchair and pram friendly. Disabled car parking bays are available at the Heritage Centre entrance to the park.

A lake (old mill pond) stream and wetland area.

Wetland, small lake, flower beds of herbs, flowers and wildflowers, grassland, rose garden, butterfly garden, woodland, walls and hedges.

https://www.pendle.gov.uk/info/20088/parks_and_outdoor_recreation/243/parks_in_pendle/4

Wild space:**Location (post code):****Facilities on site or near by:****Wheelchair/pram****Any hazards:****Habitats to discover:****For further information head to:****Heyhead Park**

Park Lane, Brierfield, BB9 5BW

Children's playground, Disabled toilets are available within the Bowling Pavilion (in season)

All paths are wheelchair and pram friendly

Non,

Grassland, trees, hedges, wildflower planting.

https://www.pendle.gov.uk/info/20088/parks_and_outdoor_recreation/243/parks_in_pendle/5

Wild space:	Ball Grove Park and Ball Grove Nature Reserve
Location (post code):	Cotton tree lane or Ball Grove Drive, Trawden BB8 7BS
Facilities on site or near by:	Playground, picnic area, lake, parking, public toilets, footpath information signs, designated disabled car parking bays.
Wheelchair/pram access:	Many of the footpaths and walkways are suitable for people with low mobility, with pushchairs or in wheelchairs. The playground has facilities for disabled users.
Any hazards:	Lake, river, main road, swampy area
Habitats to discover:	Broadleaved trees; grassland; swamp; small lake, river, wildflowers introduced shrub; hedges, fields and bare ground.
For further information head to:	https://www.pendle.gov.uk/info/20088/parks_and_outdoor_recreation/243/parks_in_pendle/3 https://www.pendle.gov.uk/info/20088/parks_and_outdoor_recreation/264/local_nature_reserves/3

Wild space:	Letcliffe Country Park
Location (post code):	Manchester Road (B6252) in Barnoldswick BB18 5HE
Facilities on site or near by:	children's play area , car park, Pendle sculpture trail, Toilets
Wheelchair/pram access:	Some of the footpaths and walkways in the park are suitable for people with low mobility, in wheelchairs or with prams.
Any hazards:	Non
Habitats to discover:	mature woodland copse and flower beds
For further information head to:	https://www.pendle.gov.uk/info/20088/parks_and_outdoor_recreation/243/parks_in_pendle/6

Wild space:	Marsden Park
Location (post code):	Walton Lane, Nelson, BB9 8BW
Facilities on site or near by:	Car park, formal gardens, woodland, stream, ornamental pond, play area, hall, and toilets (if open).
Wheelchair/pram access:	Many of the paths and walkways are suitable for people with low mobility, in wheelchairs and with prams. Some of the paths within the woodland might be muddy and uneven.
Any hazards:	Lake, pond and stream.
Habitats to discover:	sensory garden, mixed woodland, stream, grassland, swamp area, hall gardens, walled gardens,
For further information head to:	https://www.pendle.gov.uk/info/20088/parks_and_outdoor_recreation/243/parks_in_pendle/7

Wild space:	Walverden Park
Location (post code):	Brunswick Street, Nelson BB9 0TA
Facilities on site or near by:	Car parking is available on the public highways surrounding park., playground, trim trail
Wheelchair/pram access:	Many of the paths and walkways are suitable for people with low mobility., with prams and
Any hazards:	Small river and pond
Habitats to discover:	Woodland, field, river, pond, wetland area,
For further information head to:	https://www.pendle.gov.uk/info/20088/parks_and_outdoor_recreation/243/parks_in_pendle/12

Wild space:	Victoria Park
Location (post code):	Nelson, off Barrowford Road (A 6068) BB9 6DG
Facilities on site or near	Car park, café (when open), toilets in café, playground, health walk routes,
Wheelchair/pram access:	Many of the footpaths and walkways in the park are suitable for people with low mobility, in wheelchairs, or with prams. Paths in woodland are muddy. There is a disabled toilet which is accessible when the pavilion is open, which has baby changing facilities.
Any hazards:	Road divides the park in two, duck pond, river,
Habitats to discover:	Lake, grassland, wildflowers, flower beds, raised beds, hedges, mixed woodland, large trees, river and fields.
For further information head to:	https://www.pendle.gov.uk/info/20088/parks_and_outdoor_recreation/243/parks_in_pendle/10

Wild space:	Alkincoats Park and Woodlands Nature Reserve
Location (post code):	Alkincoats Road, Colne BB8 9QQ
Facilities on site or near by:	Playground, picnic area, café (when open) , car park,
Wheelchair/pram access:	Many of the footpaths are suitable for people with low mobility, with prams and wheelchairs. Disabled car parking bays are also available at the Alkincoats Road entrance.
Any hazards:	Small pond,
Habitats to discover:	Broadleaved woodland plantation, mature beech trees, small pond, wetland, wildflower-rich area, grassland, hedges
For further information head to:	https://www.pendle.gov.uk/info/20088/parks_and_outdoor_recreation/243/parks_in_pendle/2 https://www.pendle.gov.uk/info/20088/parks_and_outdoor_recreation/264/local_nature_reserves/2

Wild space:	Lomeshaye Marsh Nature Reserve
Location (post code):	Off Kirby Road, Nelson. BB9 6RS
Facilities on site or near by:	Parking is on the industrial estate, bid hide and building only open on request.
Wheelchair/pram access:	Some paths through wetland might be unsuitable for wheelchairs and prams.
Any hazards:	Large wetland and boggy area.
Habitats to discover:	Swampy wetland area, pond, old and young woodland, scrub, species rich grassland , urban wild areas and small field.
For further information head to:	https://www.pendle.gov.uk/info/20088/parks_and_outdoor_recreation/264/local_nature_reserves/5

Wild space:	Quarry Hill Nature Reserve
Location (post code):	Off Waidshouse Road, Nelson, BB9 0SB
Facilities on site or near by:	Car park
Wheelchair/pram access:	Some paths might be too steep for wheelchairs and prams, but the terrain is good.
Any hazards:	Old quarry, steep gradient in places, marsh area
Habitats to discover:	Woodland, grassland, scrub, wildflower meadow, marshy area and quarry face
For further information head to:	https://www.pendle.gov.uk/info/20088/parks_and_outdoor_recreation/264/local_nature_reserves/6

Wild space:

Greenfield Nature Reserve

Location (post code):

Off Whitewalls Drive, Colne, BB8 9QX

Facilities on site or near by:

Car parking on road

Wheelchair/pram access:

Steep slopes and floodplain area.

Any hazards:

Wetland, pond and river

Habitats to discover:

Woodland, scrub, grassland on slopes, wetland, pond, river and marshy areas.

For further information head to:

https://www.pendle.gov.uk/info/20088/parks_and_outdoor_recreation/264/local_nature_reserves/4

Burnley

Wild space:	Towneley Park
Location (post code):	Off Todmorden Rd, Burnley, BB11 3RQ
Facilities on site or near by:	Car park (charges), café and toilets (when open), playground, museum and info centre.
Wheelchair/pram access:	Level paths around park, some areas are steep and muddy in sections
Any hazards:	Roads, pond, water features, river and marshy area.
Habitats to discover:	Mixed woodland, flower borders, open grassland, fields, hedges, premature section, wildflower meadows, old trees and scrublands
For further information	https://www.burnley.gov.uk/residents/parks-open-spaces/towneley-park

Wild space:	Scott Park
Location (post code):	Off Scott Park Road, Burnley BB11 4NN
Facilities on site or near by:	Playground, toilets, car parking on road and pavilion.
Wheelchair/pram access:	Many of the footpaths and walkways are suitable for people with low mobility, with pushchairs or in wheelchairs.
Any hazards:	Small river
Habitats to discover:	Woodland, field, river,
For further information head to:	https://www.burnley.gov.uk/residents/parks-open-spaces/scott-park

Wild space:	Queens Park
Location (post code):	Burnley BB10 3AA
Facilities on site or near by:	Playground, toilets, car park, Pavilion café and toilets (when open).
Wheelchair/pram access:	Many of the footpaths and walkways are suitable for people with low mobility, with pushchairs or in wheelchairs.
Any hazards:	Roads,
Habitats to discover:	Community orchard, green houses, sensory garden, woodland, grassland, arboretum,
For further information head to:	https://www.burnley.gov.uk/residents/parks-open-spaces/queens-park

Wild space:	Thompson Park
Location (post code):	Burnley BB11 3QW
Facilities on site or near by:	Playground, boating lake, refreshment kiosk (when open), toilets and car park.
Wheelchair/pram access:	Many of the footpaths and walkways are suitable for people with low mobility, with pushchairs or in wheelchairs.
Any hazards:	Boating lake, paddling pool and river Brun.
Habitats to discover:	Italian garden, flower beds, rose garden, river, community orchard, woodland, beech garden, fields and grassland areas.
For further information head to:	https://www.burnley.gov.uk/residents/parks-open-spaces/thompson-park

Wild space:	Forest of Burnley
Location (post code):	Various—across Burnley
Facilities on site or near by:	limited
Wheelchair/pram access:	Some areas planted as part of the Forest of Burnley may have pram/wheelchair access
Any hazards:	These woodlands are situated across Burnley, some may have hazards
Habitats to discover:	Woodlands, some more recently planted as
For further information head to:	https://www.burnley.gov.uk/residents/parks-open-spaces/forest-burnley

